



SLIDING DOORS



L11.11
PENTA-LOCK

01.09.2013



PENTA-LOCK

CONTENTS

1. General L11.11.03

2. Penta-Lock n° 6770 L11.11.05

3. Penta-Lock n° 6772 L11.11.07

4. Penta-Lock n° 6774..... L11.11.09

5. Penta-Lock n° 6781 L11.11.11

6. Penta-Lock n° 6782 L11.11.13

7. Penta-Lock n° 6784 L11.11.15

8. Penta-Lock n° 6790 and n° 6790P L11.11.17

9. Penta-Lock n° 6792 L11.11.19

10. Wedges n° 6870 and n° 6871 L11.11.21

11. Shootbolt n° 6795 L11.11.22

12. Application examples..... L11.11.24

13. Ordering example L11.11.25

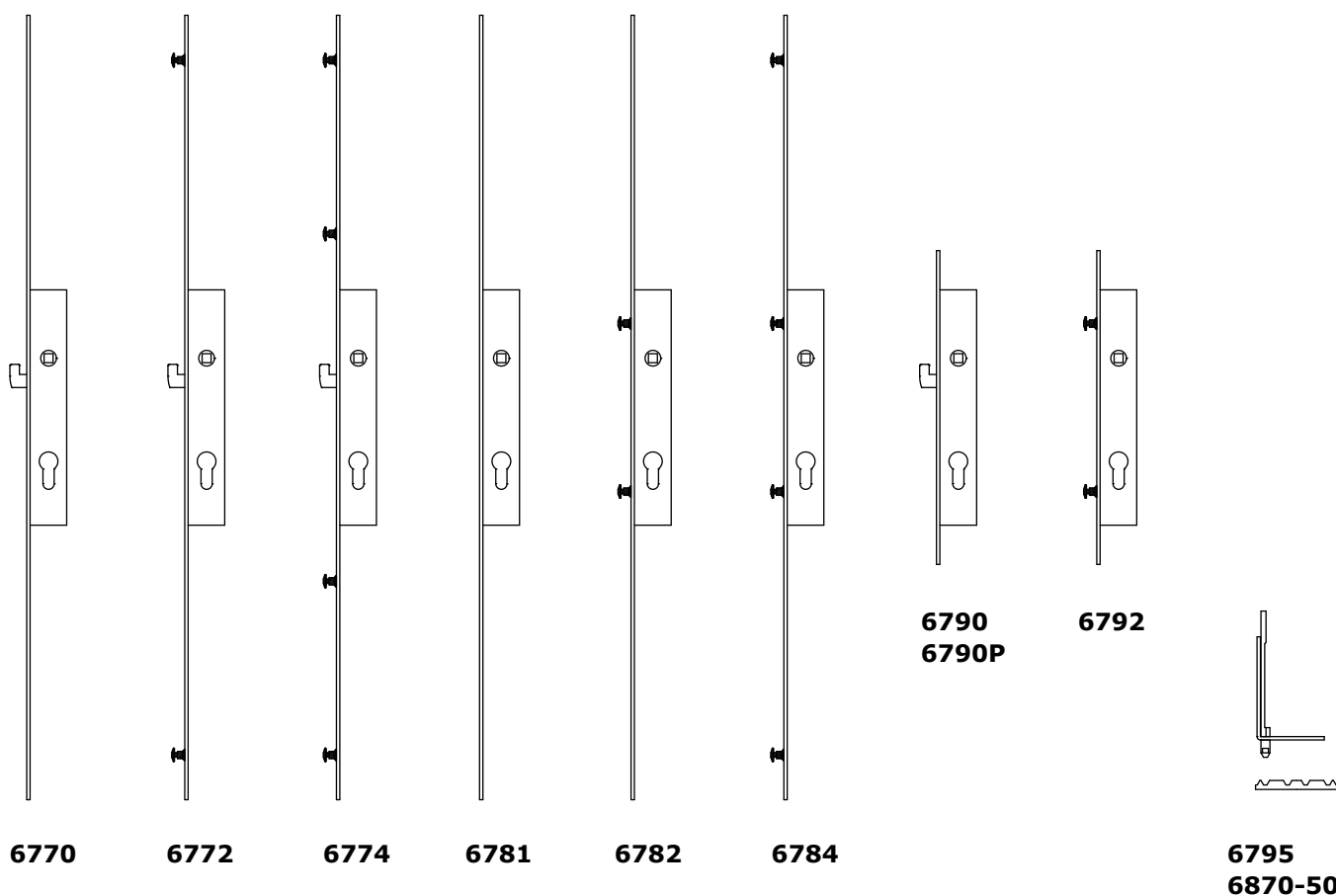
14. Penta-Lock type SKG L11.11.26

15. Long keeps L11.11.27



1. General

- High security multipoint lock for sliding doors.
- The Penta-Lock is closed when the handle is in the vertical position and open in the horizontal position. The multipoint lock is handle operated and is locked in the closed position with a euro-profile cylinder.
- This strong multipoint lock is available with flat stainless steel faceplate 16 and 20 mm wide for PVC and timber sliding doors and with U-faceplate 20 and 24 mm wide for aluminium sliding doors.
- The Penta-Lock is manufactured completely from non-corroding materials.
- The Penta-Lock is:
 - multipoint lock with pivoting night hook and 0, 2 or 4 mushroom head bolts on a long faceplate (n° 6770, n° 6772 or n° 6774).
 - multipoint lock with long faceplate for three or four part sliding doors (n° 6781).
 - multipoint lock with 2 or 4 mushroom head bolts on a long faceplate (n° 6782 or n° 6784).
 - single lock with pivoting night hook (n° 6790).
 - single lock with 2 mushroom head bolts on a short faceplate (n° 6792).





PENTA-LOCK

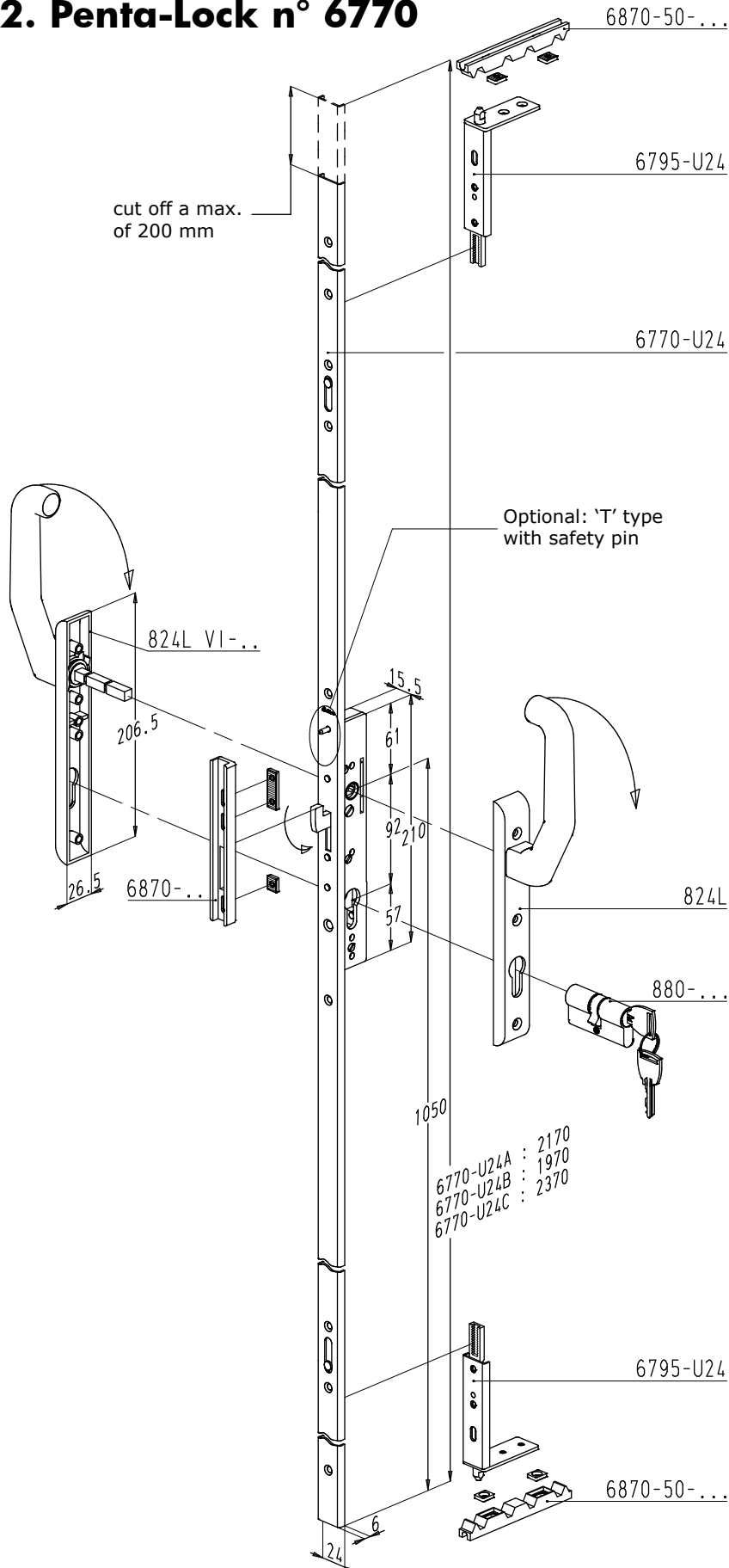
- The Penta-Lock can also be extended with a top and bottom shootbolt (n° 6795) in order to obtain 2 extra locking points. With the shootbolt night vent wedges (n° 6870-50) the sliding door can be locked in a night vent position, providing ventilation.
- The upward pivoting night hook in stainless steel prevents the lifting up of the door, and consequently the opening of the sliding door when in the locked position. The installation of an additional packer between the door and frame, to prevent forced entry, is no longer necessary.
- The mushroom head bolts in stainless steel provide several locking points spread over the height of the sliding door. These mushroom head bolts have a horizontal adjustment of 2.5 mm.
- The wedges and adjusting plates are toothed for easy adjustment in height (up to 9 mm vertical adjustment). Because both are toothed it is impossible for the wedge to move after tightening.
- The shootbolt night vent wedges and adjusting plates are also toothed and have a horizontal adjustment of 6.5 mm.
- The Penta-Lock (6770, 6772, 6774, 6790) can be supplied with a safety pin ('T' type), preventing incorrect operation of the handle. This safety device prevents the locking mechanism being operated accidentally on the open sliding door.
- The Penta-Lock can only be operated by several door handle types: see chapter L13.11. We recommend to use the fixed pull with turn knob (n° 6780) only to operate the Penta-Lock single lock. Locking of the system is done with a euro-profile cylinder.
- The locks are tested in accordance with the European standard EN 13126-19:2011 and obtained the following classification code:

Category of use	Durability	Door mass	Fire resistance	Safety	Corrosion resistance	Security	Application part	Test sizes
-	5	-	0	1	4	-	19/1	-

What ever the application, Penta-Lock provides the best security!

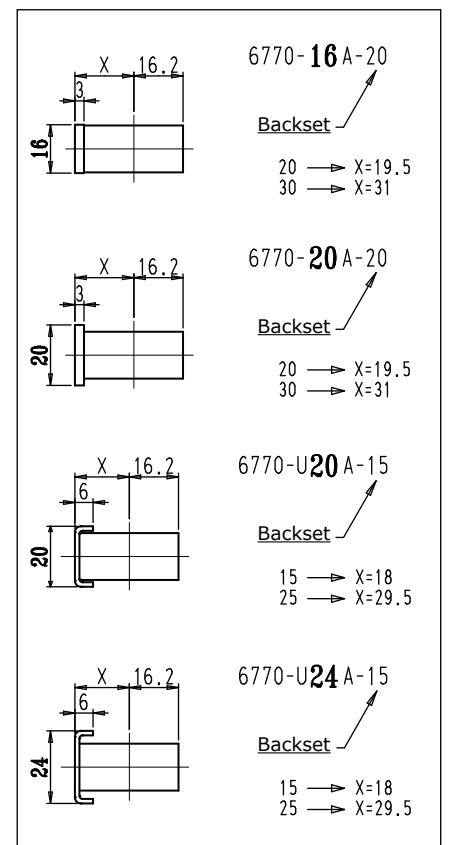
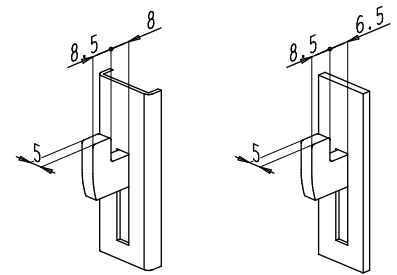


2. Penta-Lock n° 6770



Locking points: 1 pivoting night hook
Option: shootbolts

Detail of night hook

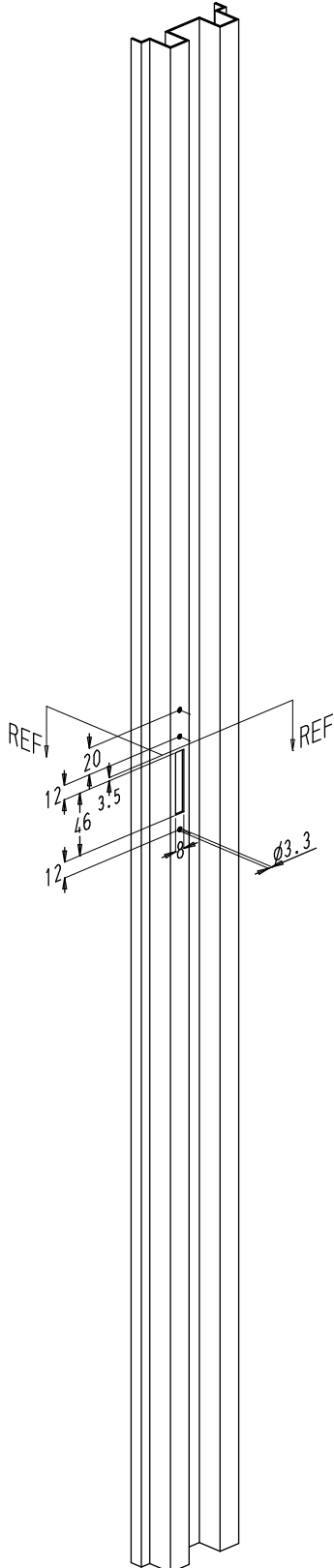




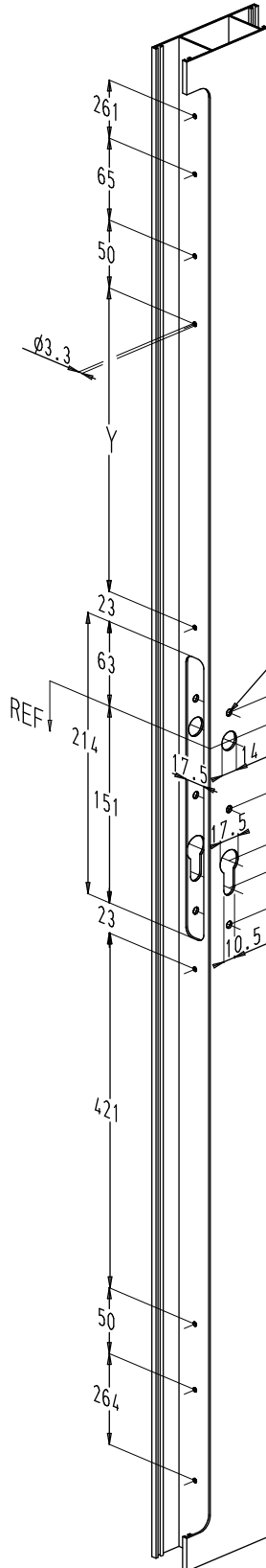
PENTA-LOCK

Dimensions for fixing holes Penta-Lock n° 6770

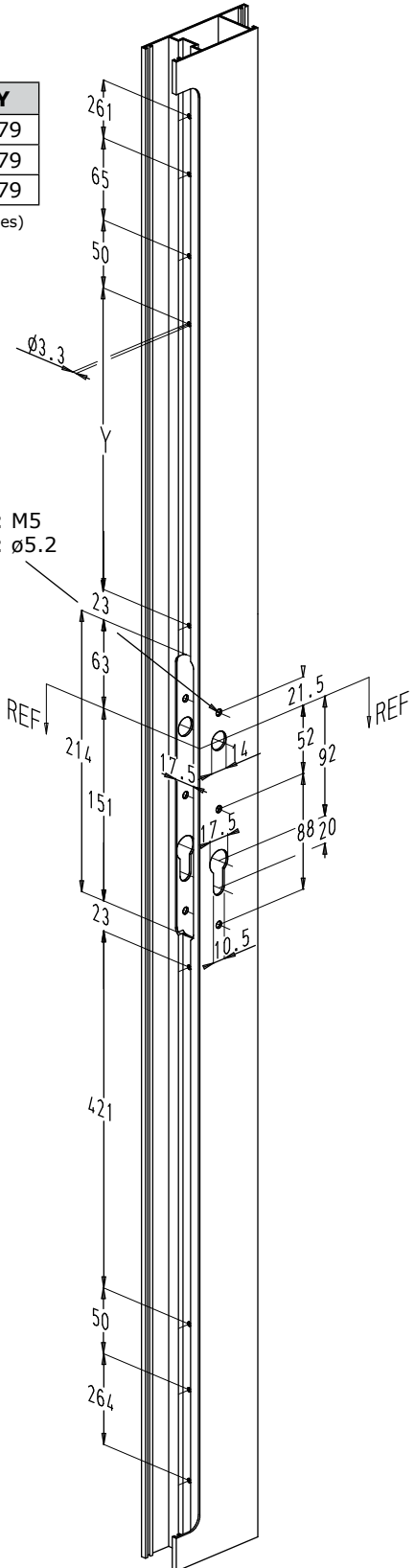
frame section



vent section (U-faceplate)



vent section (flat faceplate)



Length	Y
A (2170)	579
B (1970)	379
C (2370)*	779

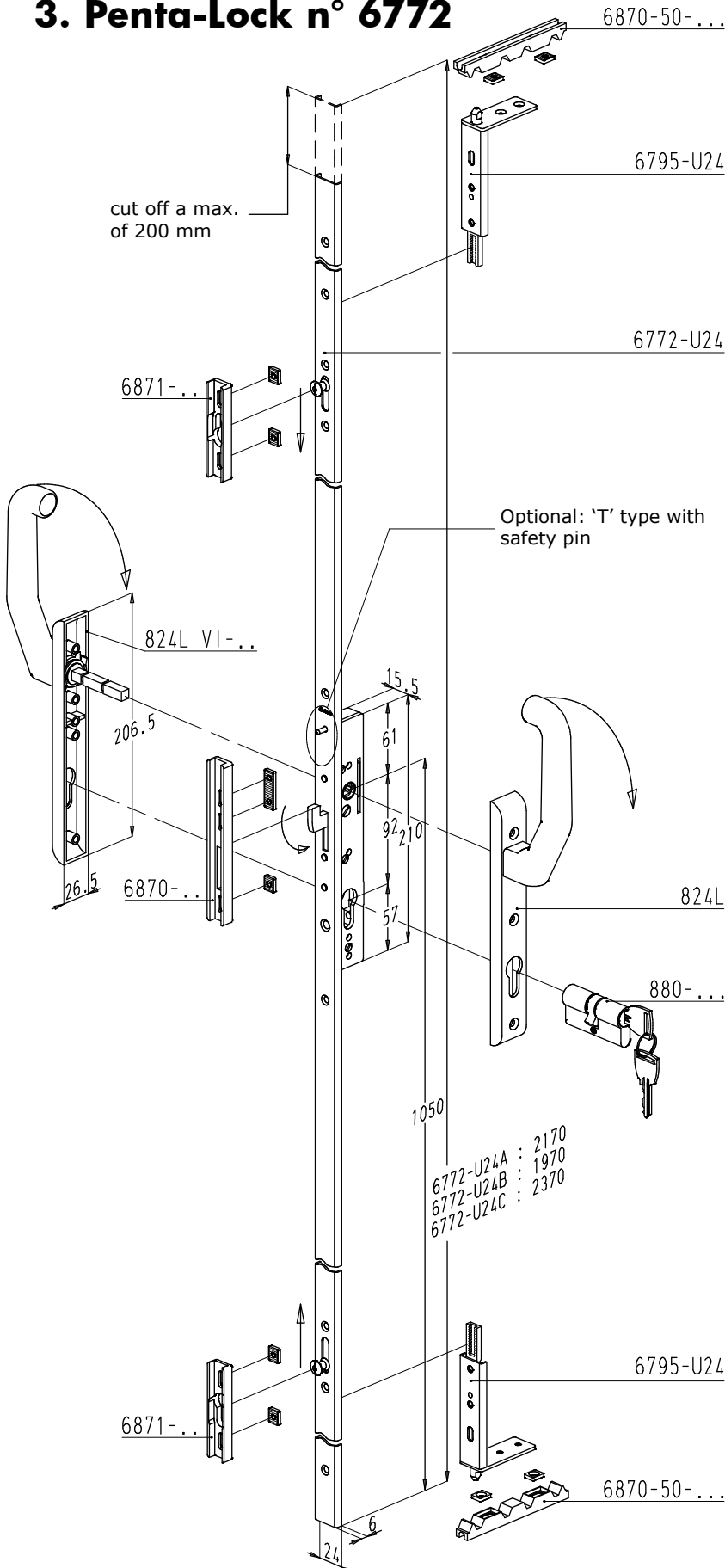
(* extra fixing holes)

Using:
1 handle : M5
2 handles : Ø5.2

- REF: height reference.
- Backset: see previous page (X dimension).

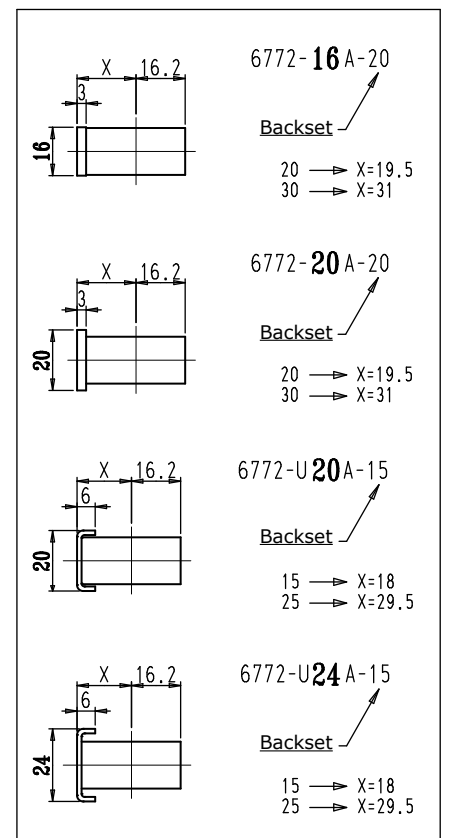
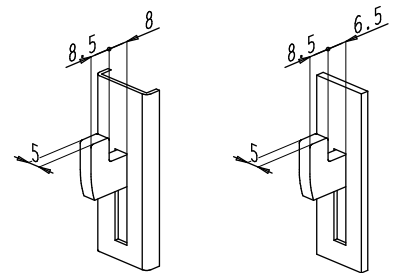


3. Penta-Lock n° 6772



Locking points: 1 pivoting night hook
2 mushroom head bolts
Option: shootbolts

Detail of night hook





PENTA-LOCK

Dimensions for fixing holes Penta-Lock n° 6772

frame section

vent section (U-faceplate)

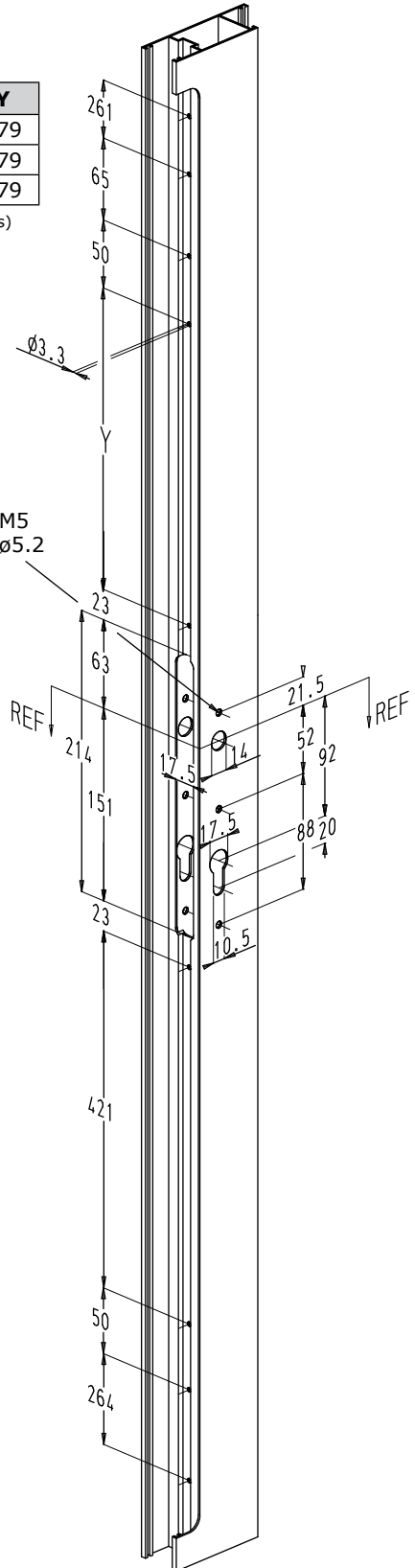
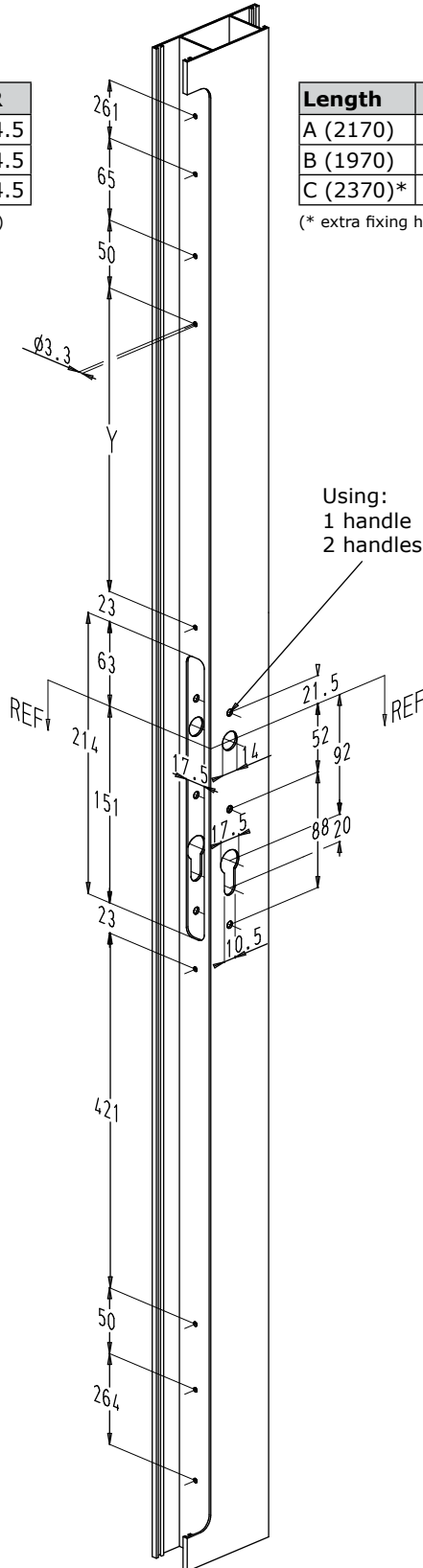
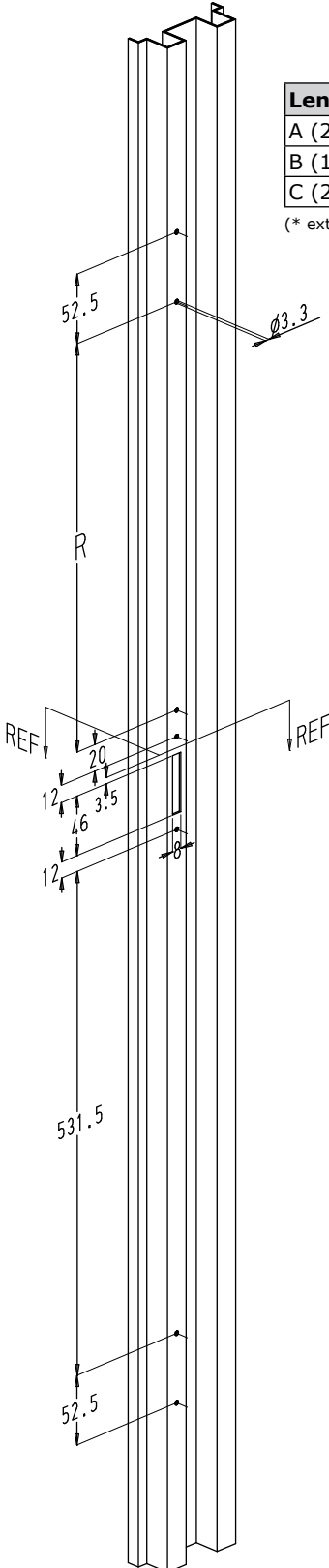
vent section (flat faceplate)

Length	R
A (2170)	634.5
B (1970)	434.5
C (2370)*	834.5

(* extra fixing holes)

Length	Y
A (2170)	579
B (1970)	379
C (2370)*	779

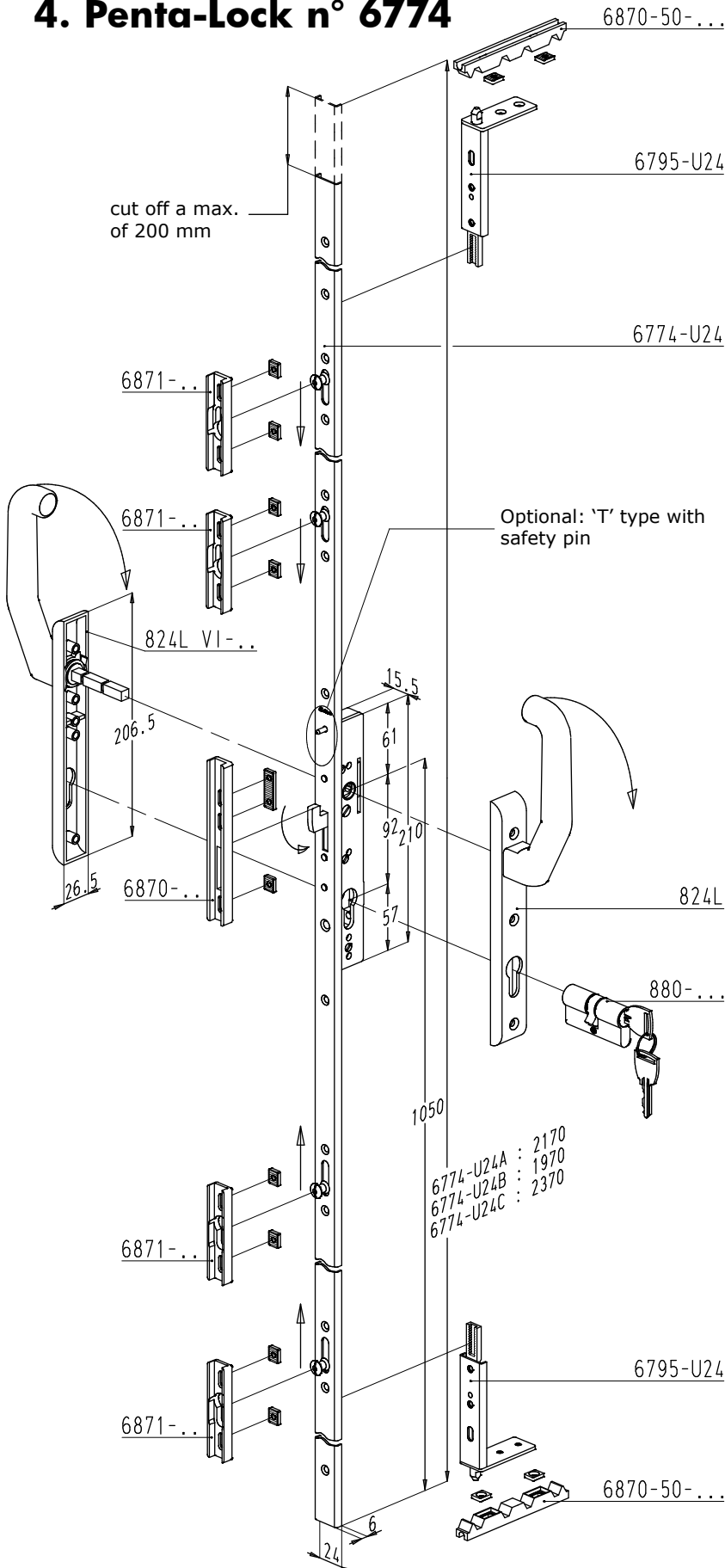
(* extra fixing holes)



- REF: height reference.
- Backset: see previous page (X dimension).

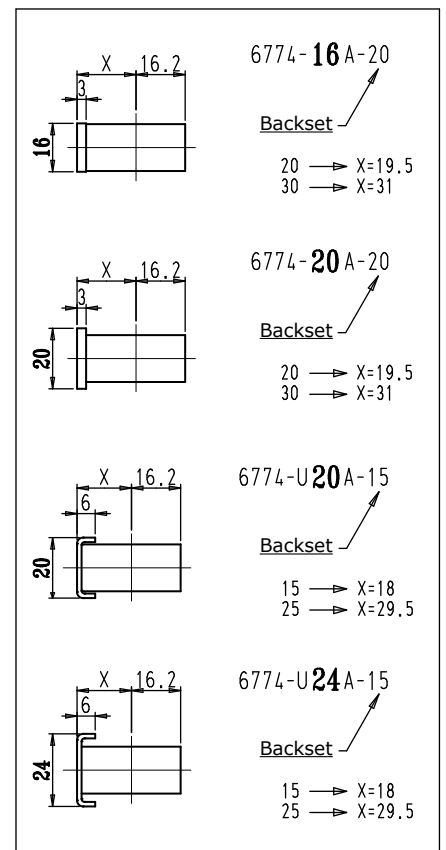
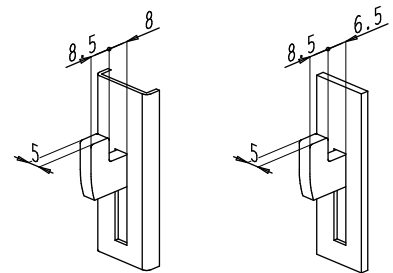


4. Penta-Lock n° 6774



Locking points: 1 pivoting night hook
4 mushroom head bolts
Option: shootbolts

Detail of the night hook





PENTA-LOCK

Dimensions for fixing holes Penta-Lock n° 6774

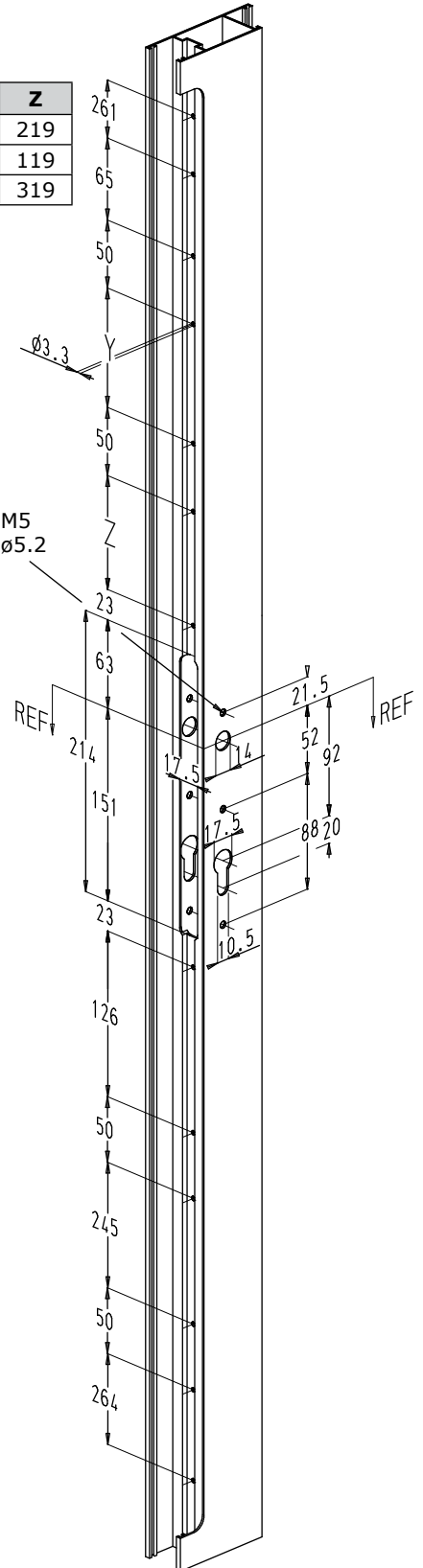
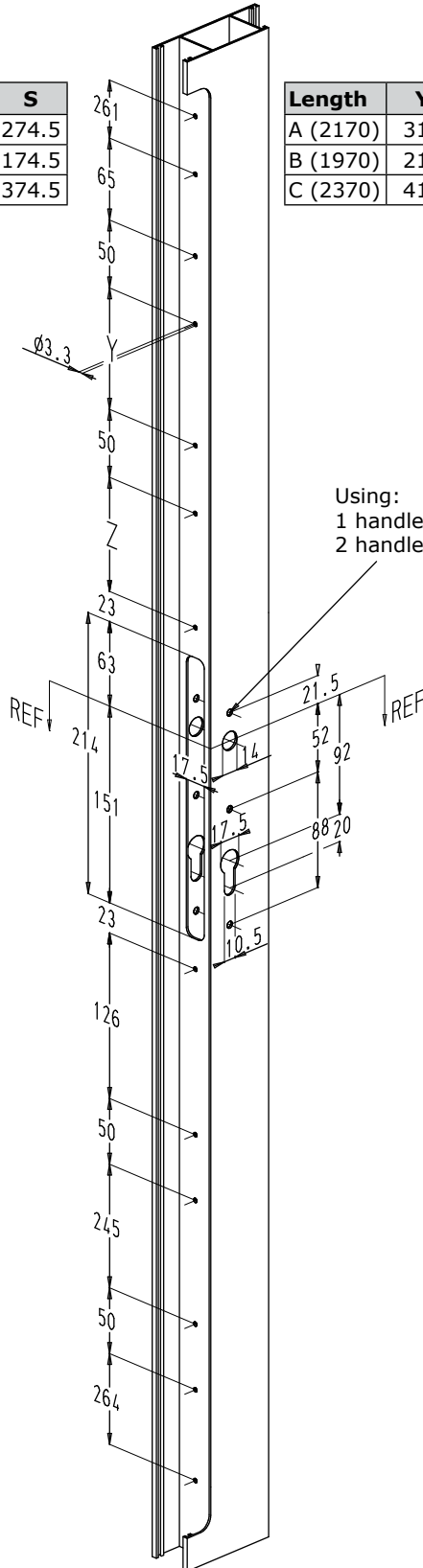
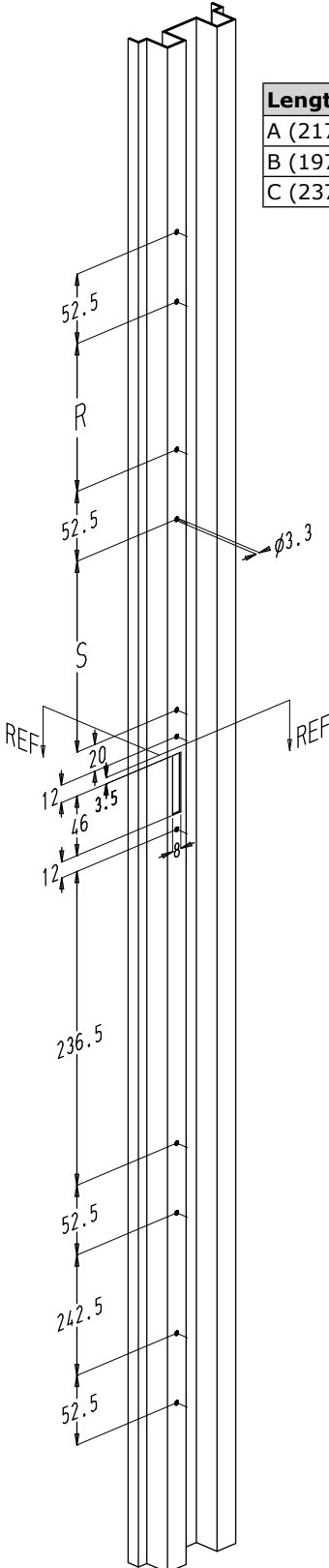
frame section

vent section (U-faceplate)

vent section (flat faceplate)

Length	R	S
A (2170)	307.5	274.5
B (1970)	207.5	174.5
C (2370)	407.5	374.5

Length	Y	Z
A (2170)	310	219
B (1970)	210	119
C (2370)	410	319

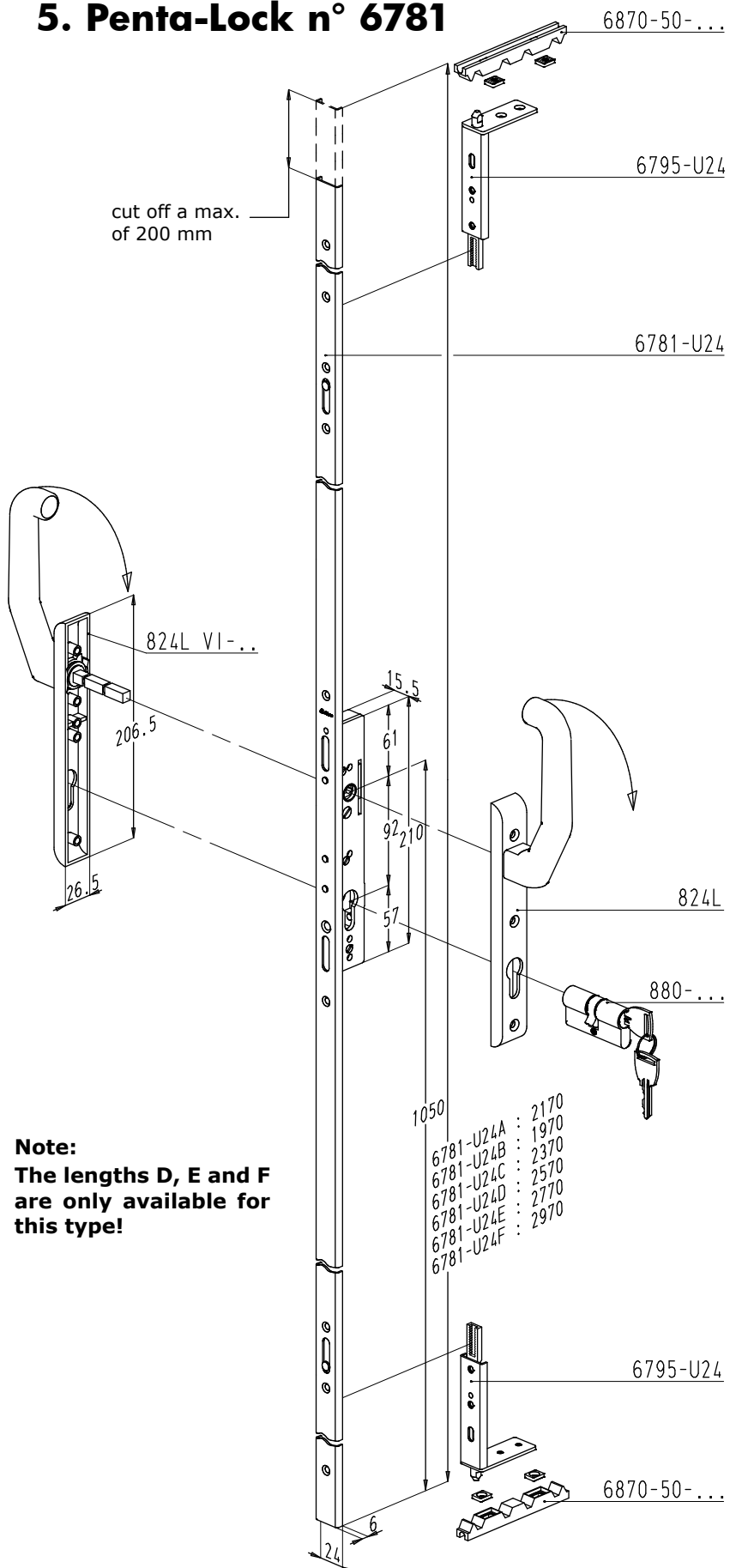


Using:
 1 handle : M5
 2 handles : ø5.2

- REF: height reference.
- Backset: see previous page (X dimension).

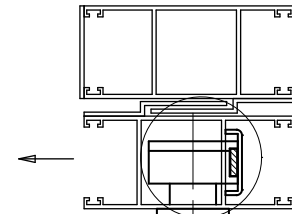


5. Penta-Lock n° 6781

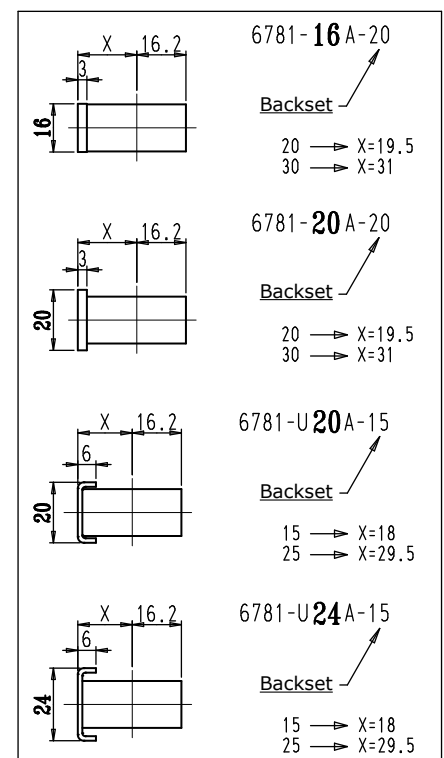
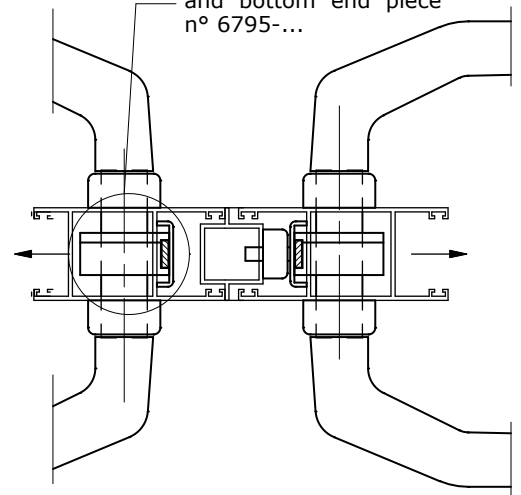


Note:
The lengths D, E and F are only available for this type!

Locking points: 2 shootbolts
(to be ordered separately)



N° 6781 is used in three and four part sliding doors, always with top and bottom end piece n° 6795-...

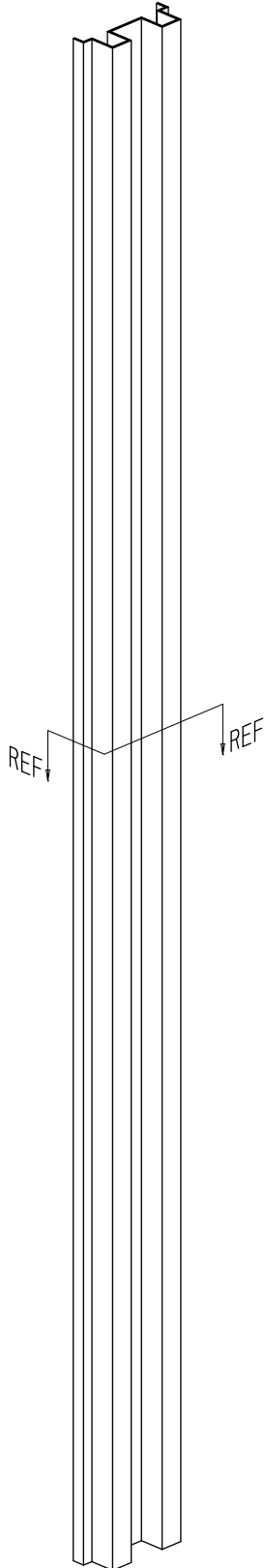




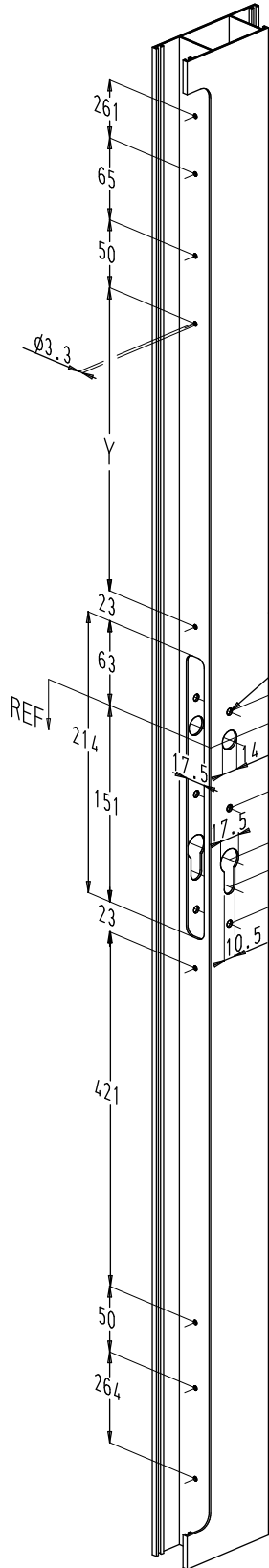
PENTA-LOCK

Dimensions for fixing holes Penta-Lock n° 6781

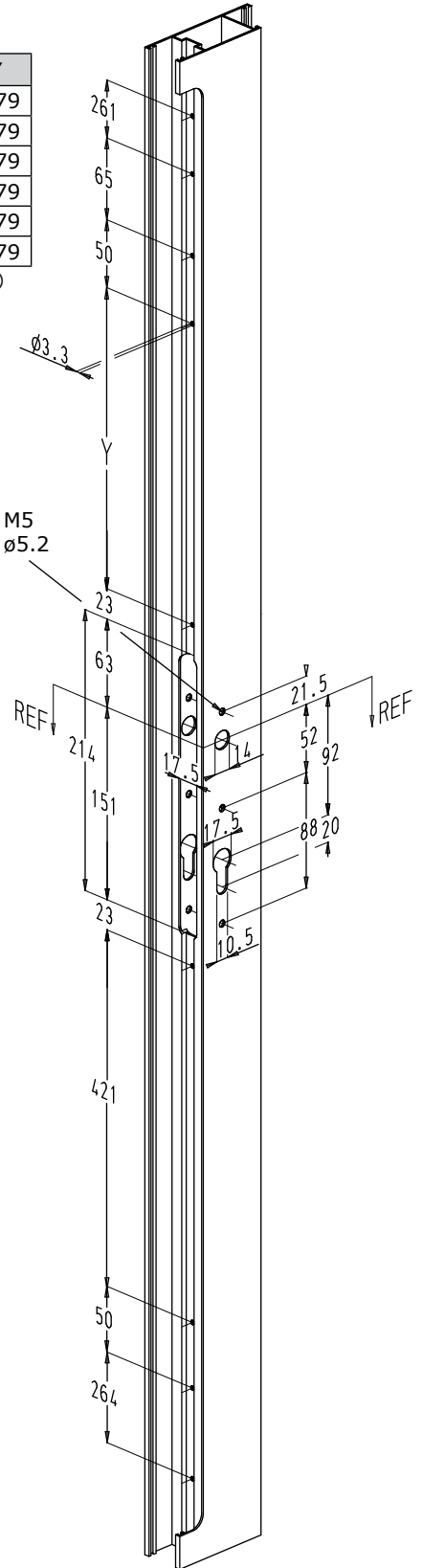
frame section



vent section (U-faceplate)



vent section (flat faceplate)



Length	Y
A (2170)	579
B (1970)	379
C (2370)*	779
D (2570)*	979
E (2770)*	1179
F (2970)*	1379

(* extra fixing holes)

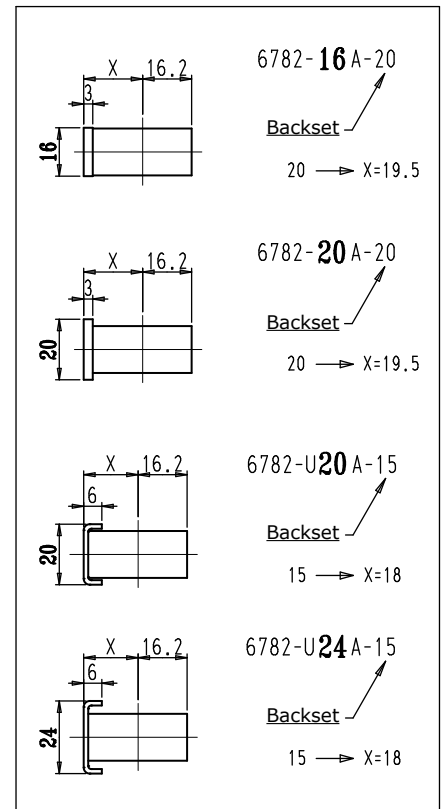
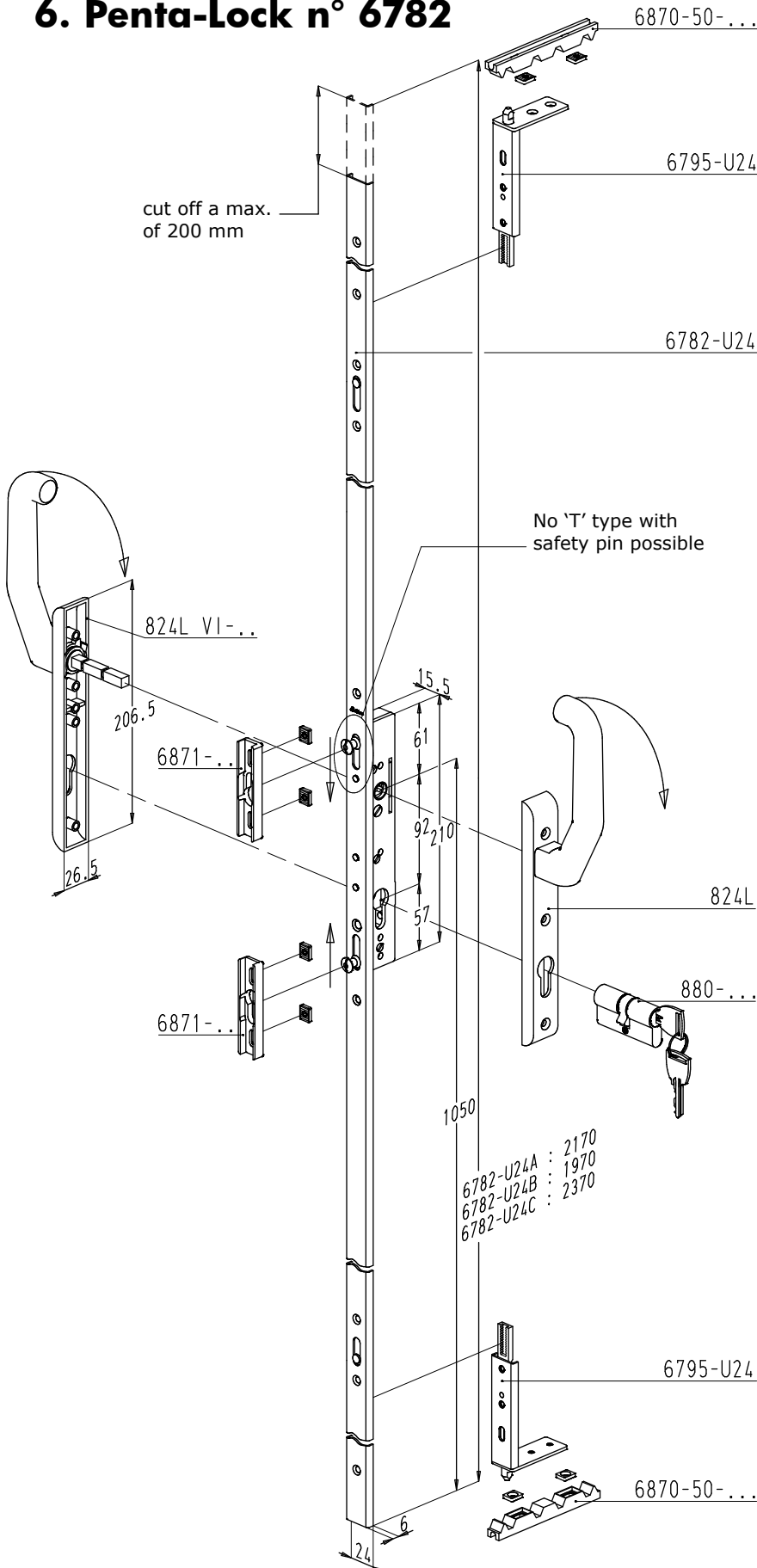
Using:
1 handle : M5
2 handles : ø5.2

- REF: height reference.
- Backset: see previous page (X dimension).



6. Penta-Lock n° 6782

Locking points: 2 mushroom head bolts
Option: shootbolts

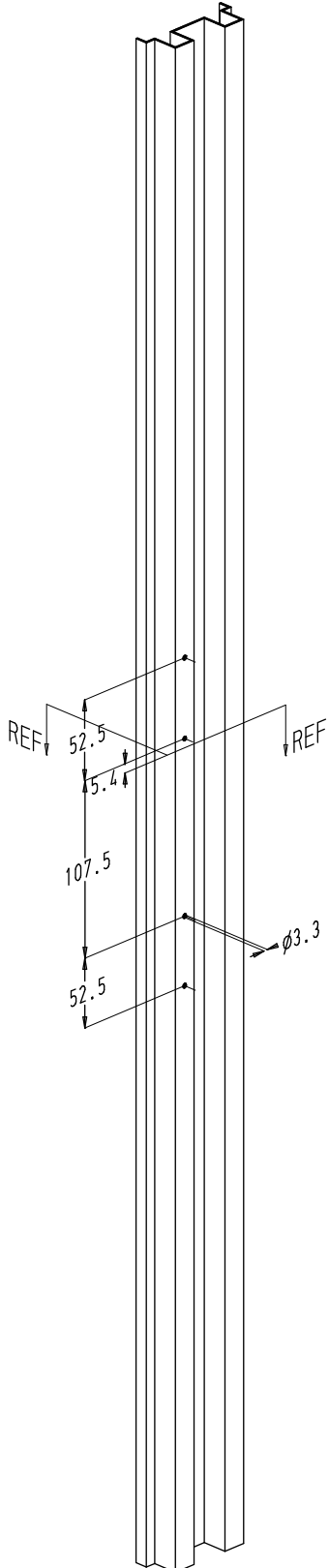




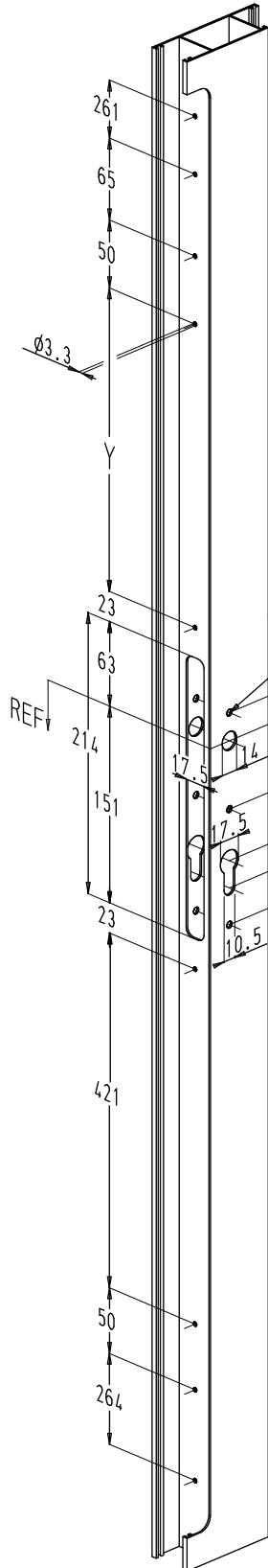
PENTA-LOCK

Dimensions for fixing holes Penta-Lock n° 6782

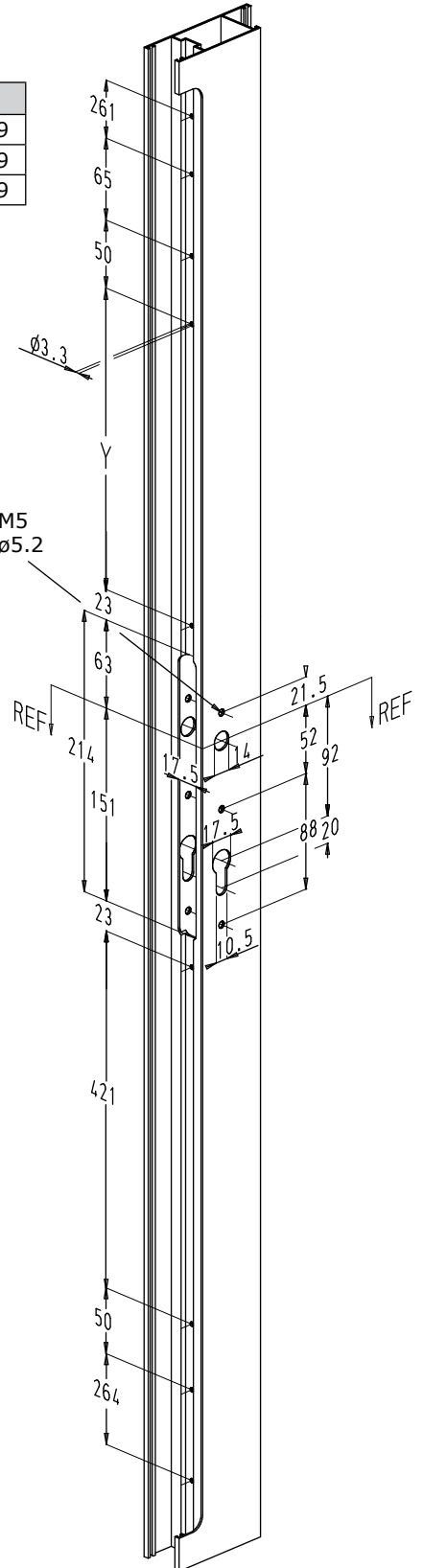
frame section



vent section (U-faceplate)



vent section (flat faceplate)



Length	Y
A (2170)	579
B (1970)	379
C (2370)*	779

(* extra fixing holes)

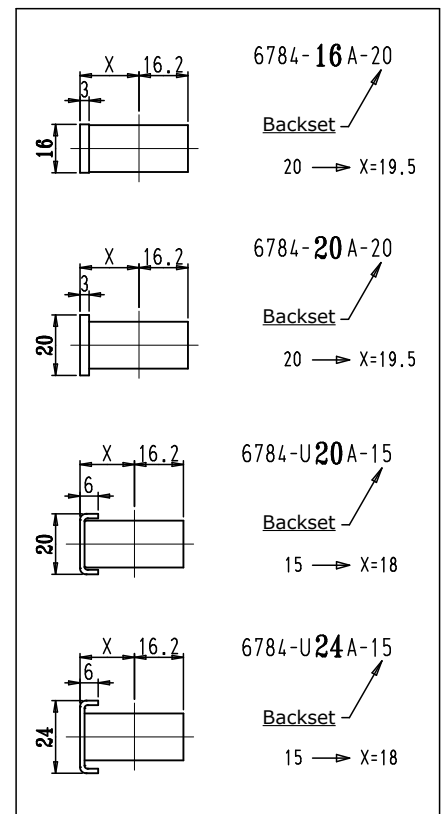
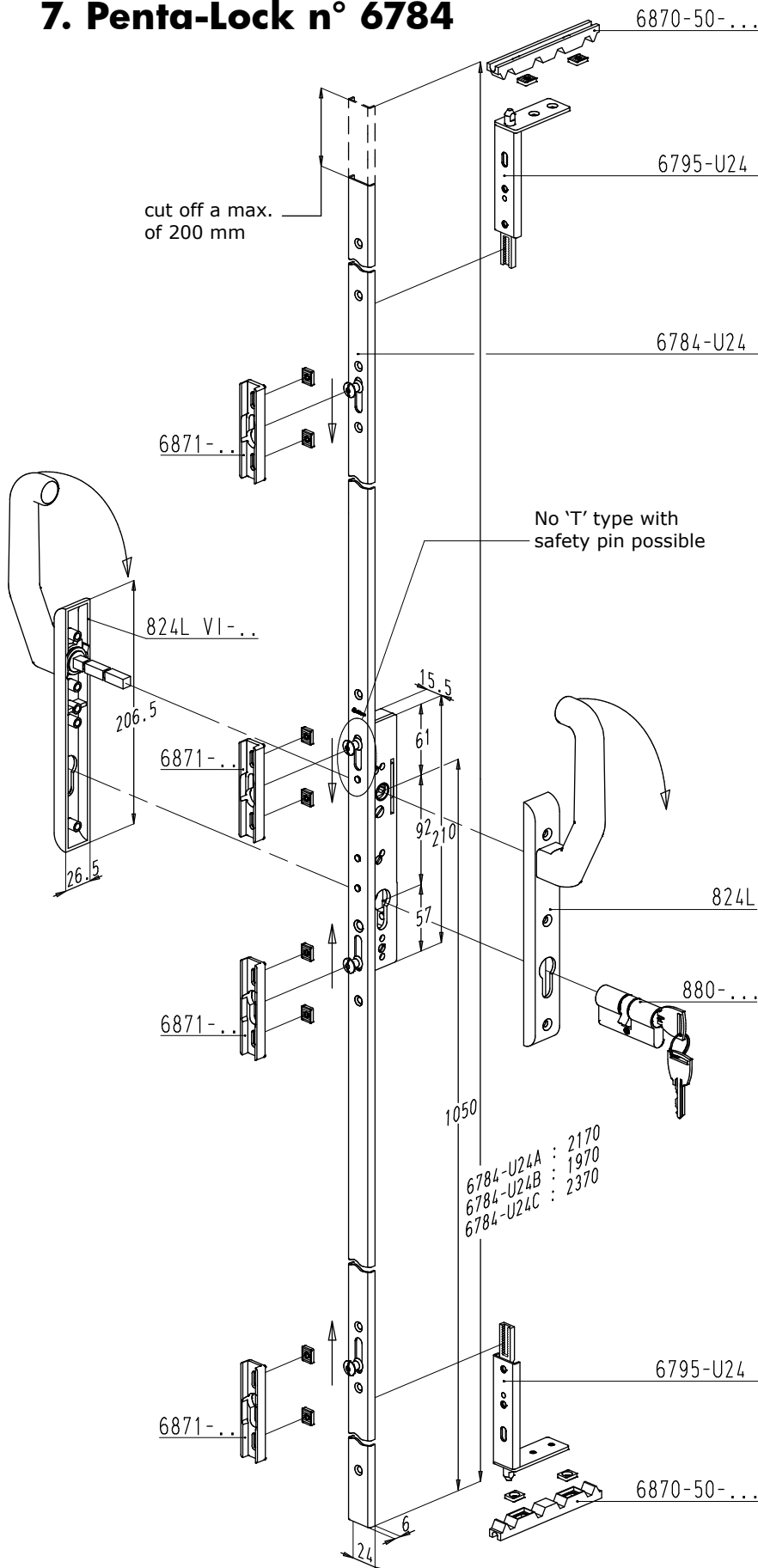
Using:
1 handle : M5
2 handles : ø5.2

- REF: height reference.
- Backset: see previous page (X dimension).



7. Penta-Lock n° 6784

Locking points: 4 mushroom head bolts
Option: shootbolts

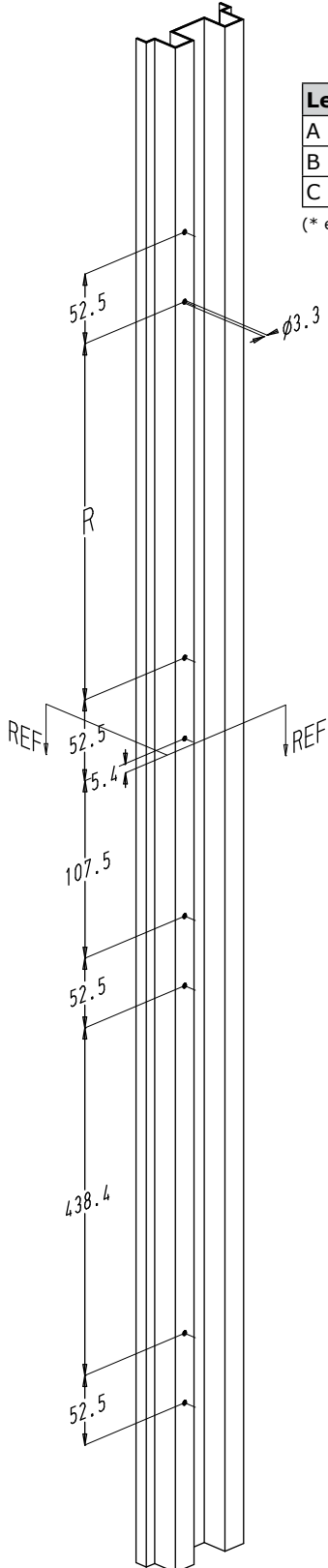




PENTA-LOCK

Dimensions for fixing holes Penta-Lock n° 6784

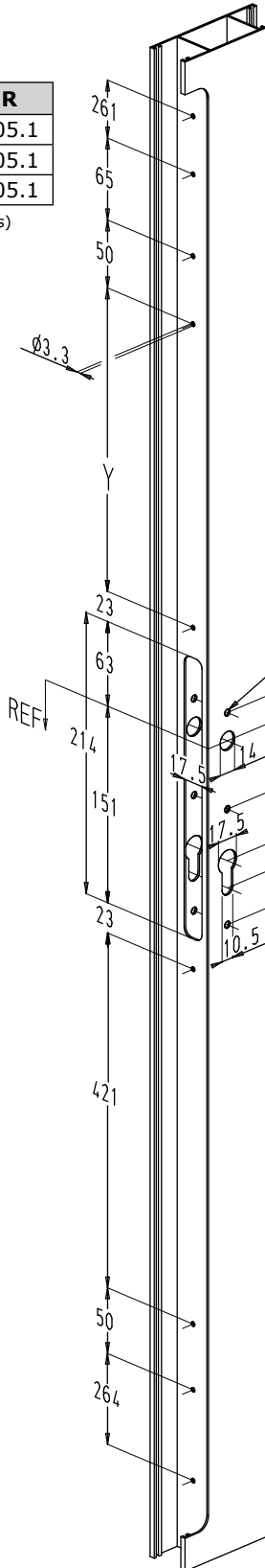
frame section



Length	R
A (2170)	605.1
B (1970)	405.1
C (2370)*	805.1

(* extra fixing holes)

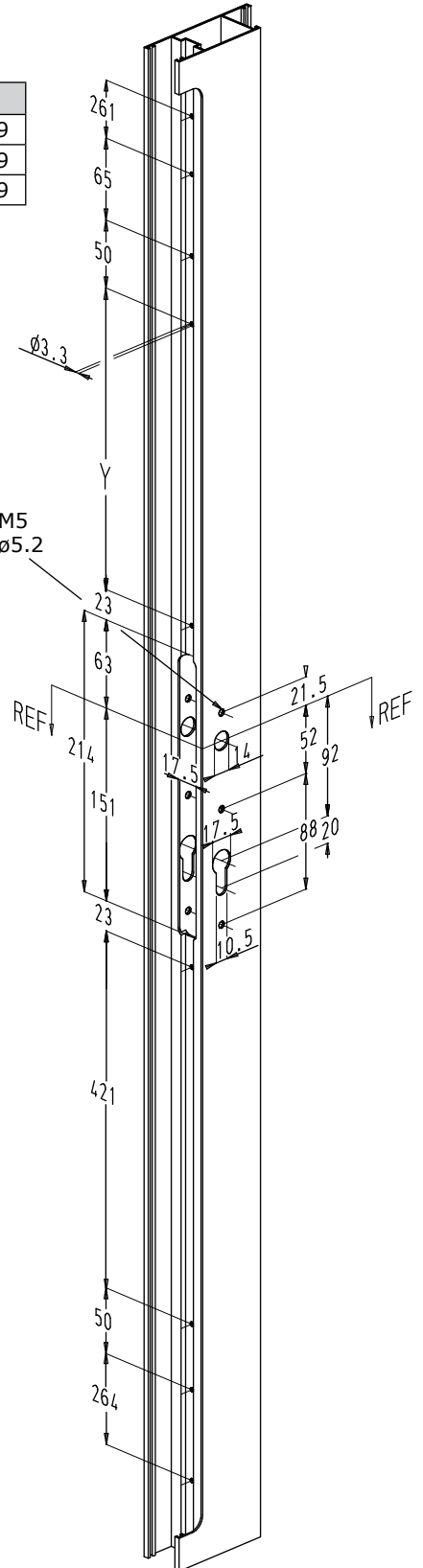
vent section (U-faceplate)



Length	Y
A (2170)	579
B (1970)	379
C (2370)*	779

(* extra fixing holes)

vent section (flat faceplate)



Using:
1 handle : M5
2 handles : 5.2

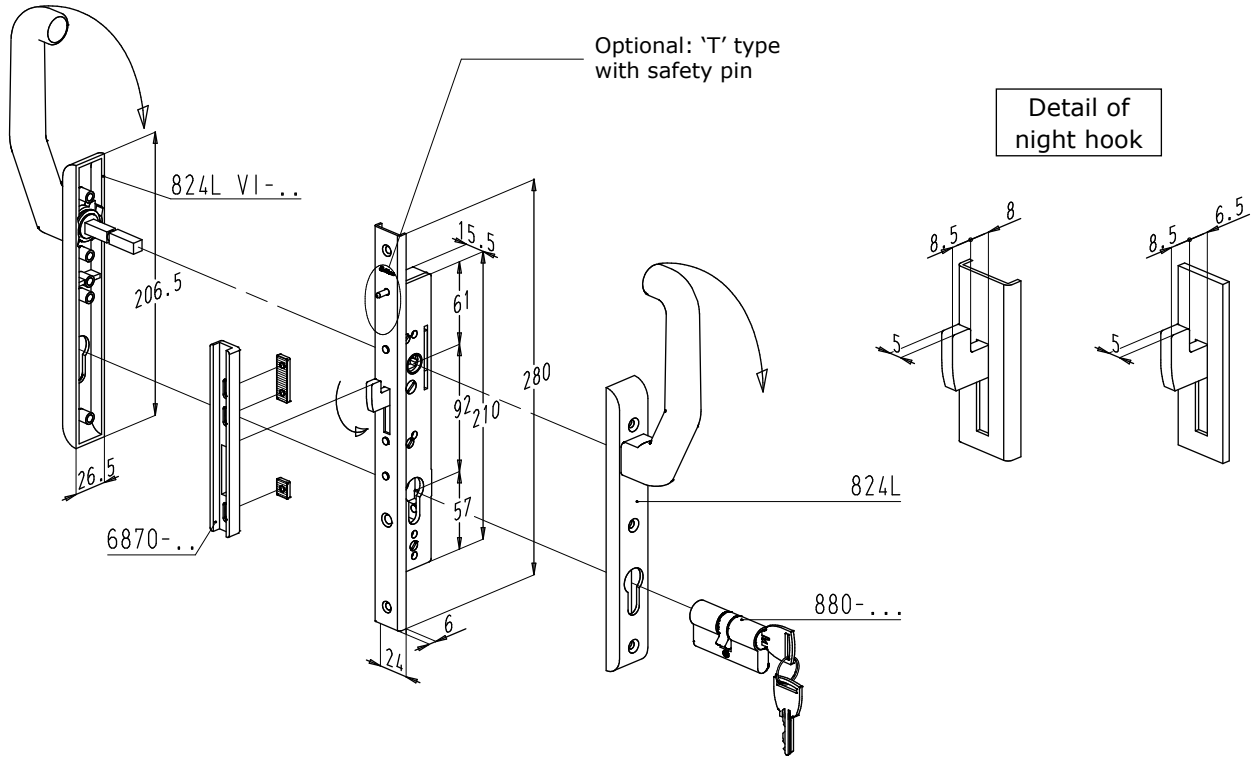
- REF: height reference.
- Backset: see previous page (X dimension).



8. Penta-Lock n° 6790 and n° 6790P

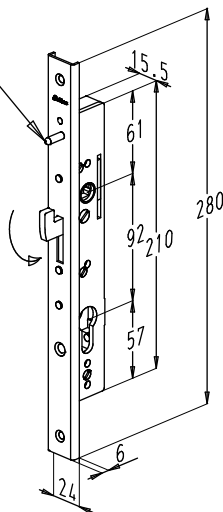
Penta-Lock n° 6790

Locking points: 1 pivoting night hook

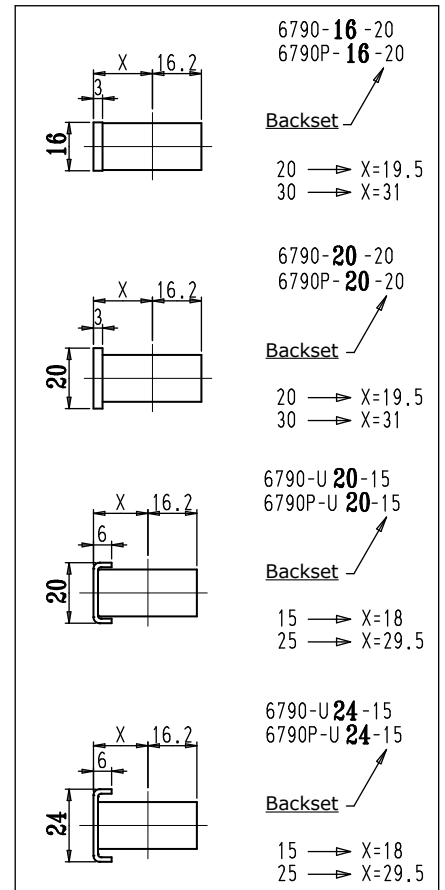


Penta-Lock n° 6790P

'P' with anti-lift pin:
Prevents the lifting up of the vent when fitted without cylinder.



No 'T' type possible!

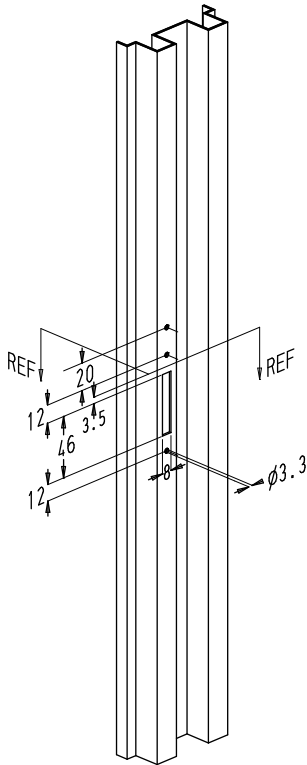




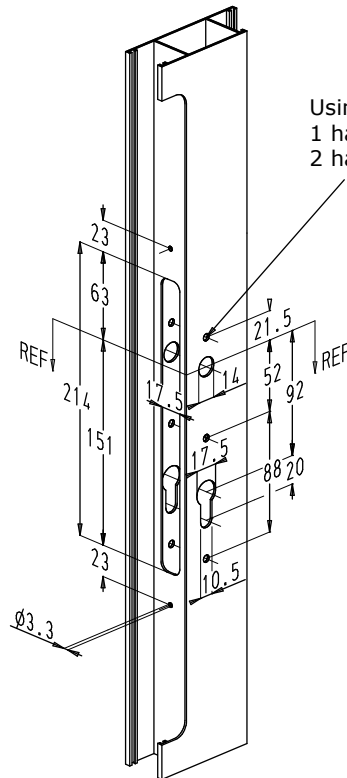
PENTA-LOCK

Dimensions for fixing holes Penta-Lock n° 6790 and 6790P

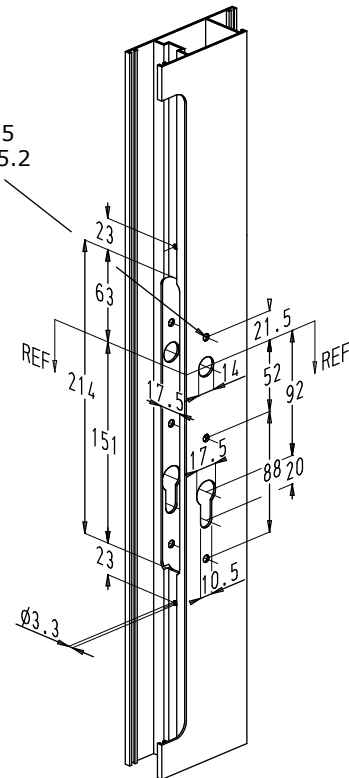
frame section



vent section
(U-faceplate)



vent section
(flat faceplate)



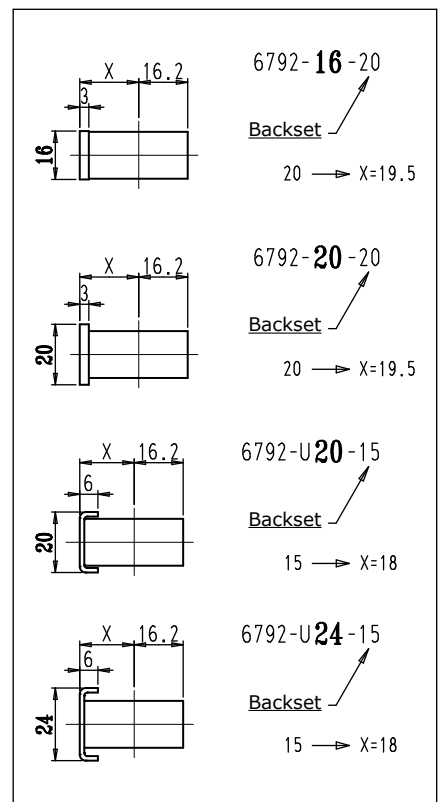
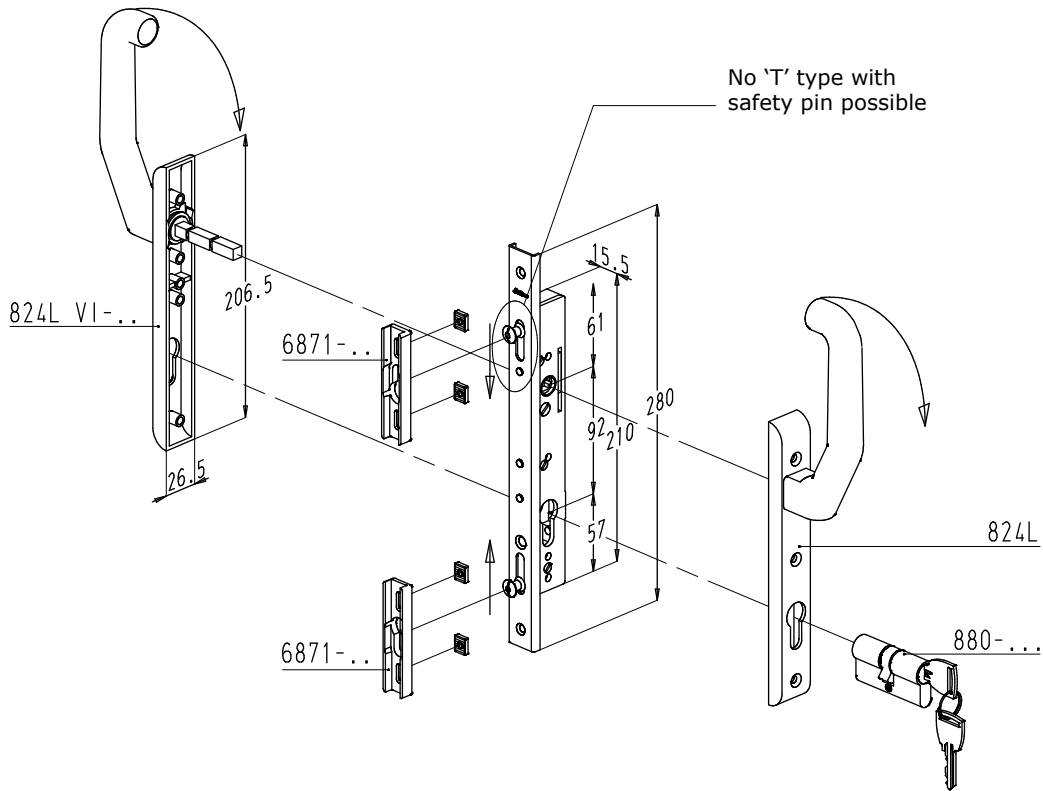
Using:
1 handle : M5
2 handles : Ø5.2

- REF: height reference.
- Backset: see previous page (X dimension).



9. Penta-Lock n° 6792

Locking points: 2 mushroom head bolts

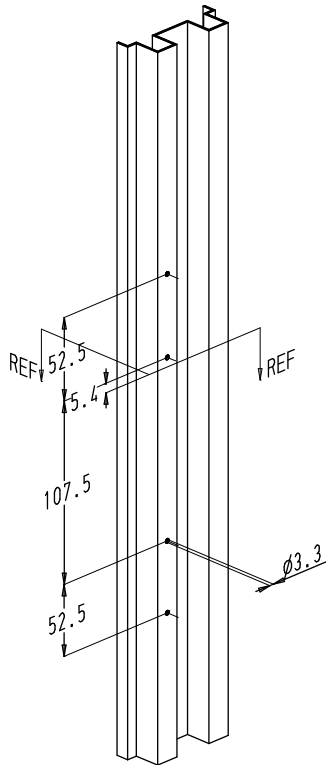




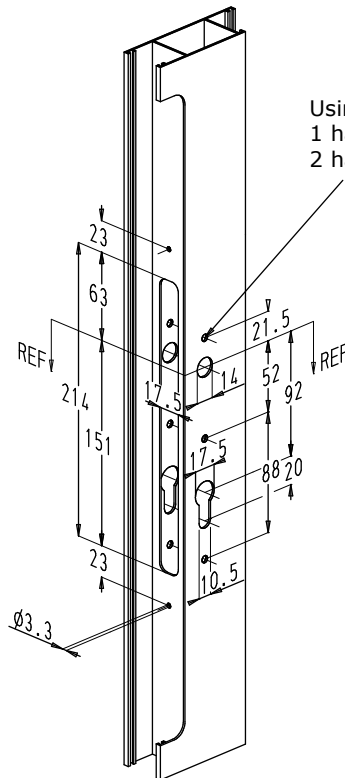
PENTA-LOCK

Dimensions for fixing holes Penta-Lock n° 6792

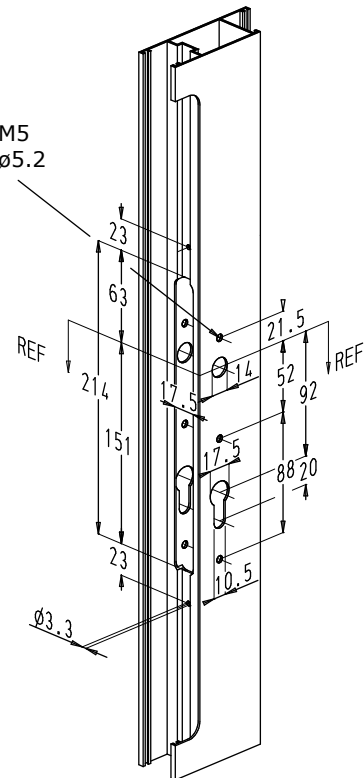
frame section



vent section
(U-faceplate)



vent section
(flat faceplate)



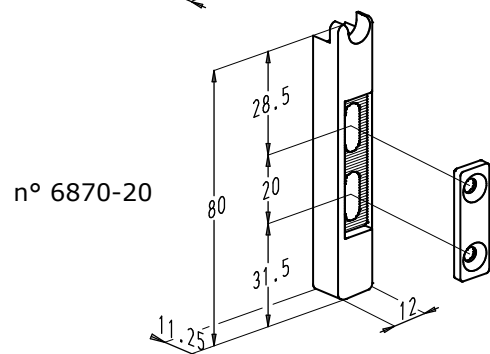
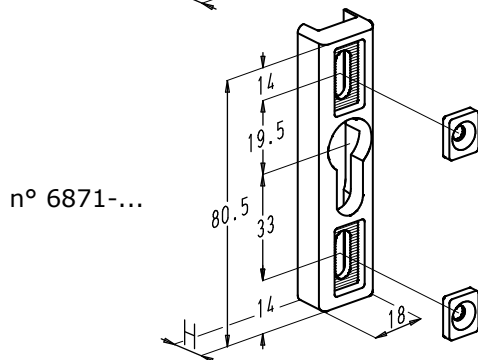
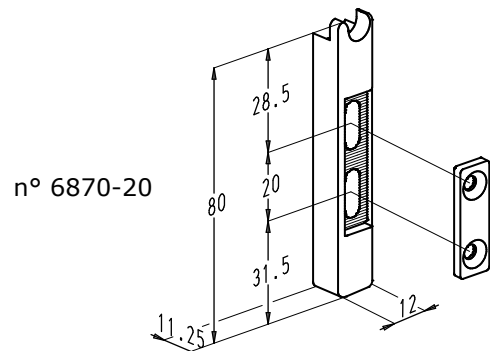
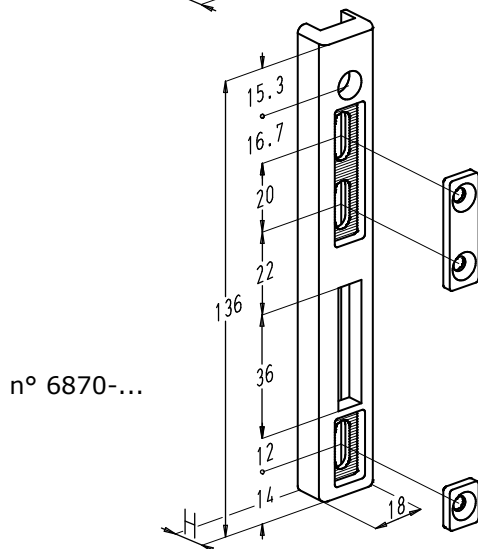
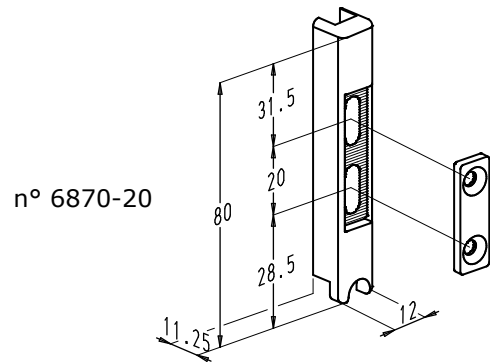
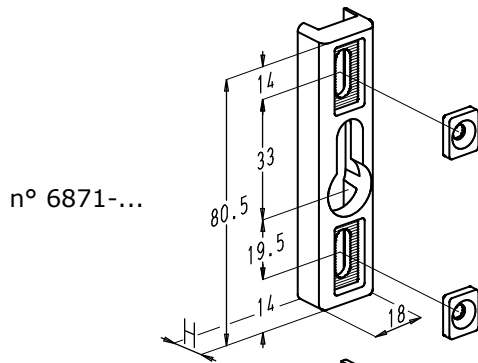
Using:
1 handle : M5
2 handles : Ø5.2

- REF: height reference.
- Backset: see previous page (X dimension).

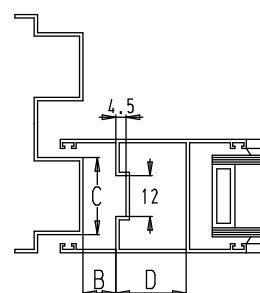


10. Wedges n° 6870 and n° 6871

• Wedges in zinc alloy.

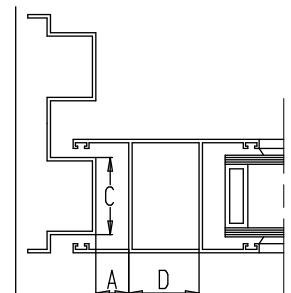


Wedge		H	A(±0.25)	B(±0.25)	C
6870-1	6871-1	16	24.25	19.75	>18
6870-2	6871-2	10.75	19	14.5	>18
6870-4	6871-4	26	34.25	29.75	>18
6870-5	6871-5	22.5	30.75	26.25	>18
6870-6	6871-6	9	17.25	12.75	>18
6870-7	6871-7	6.5	14.75	10.25	>18
6870-8	6871-8	19	27.25	22.75	>18
6870-9	6871-9	13.75	22	17.5	>18
6870-10	6871-10	5	13.25	8.75	>18
6870-20		11.25	19.5	15	>12



Flat faceplate

D>32.7 Backset 20
D>44.2 Backset 30



U-faceplate

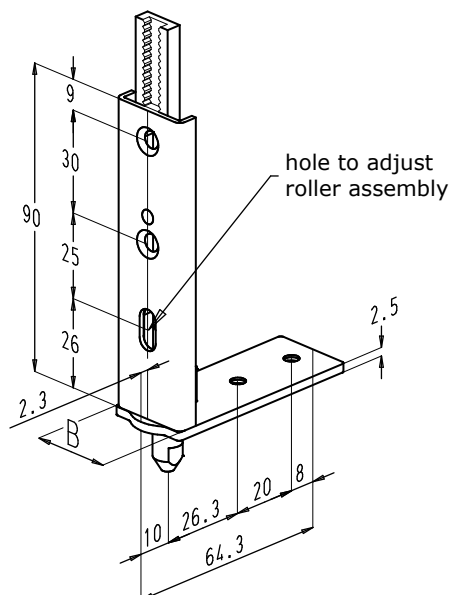
D>28.2 Backset 15
D>39.7 Backset 25



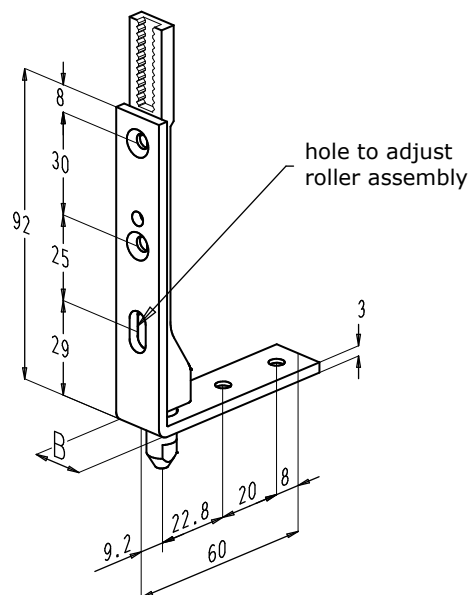
PENTA-LOCK

11. Shootbolt n° 6795

- Suitable for Penta-Lock n° 6770, 6772, 6774, 6781, 6782, 6784.

Shootbolt n° 6795-...

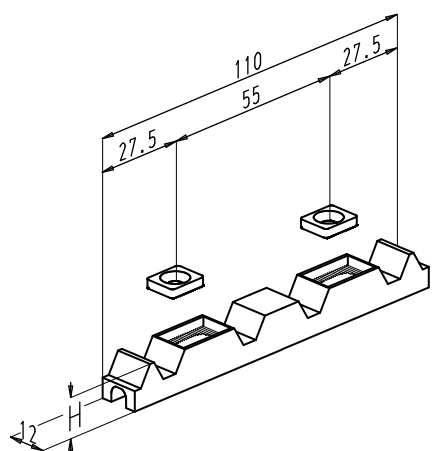
n° 6795-U20 : B=20 mm
n° 6795-U24 : B=24 mm



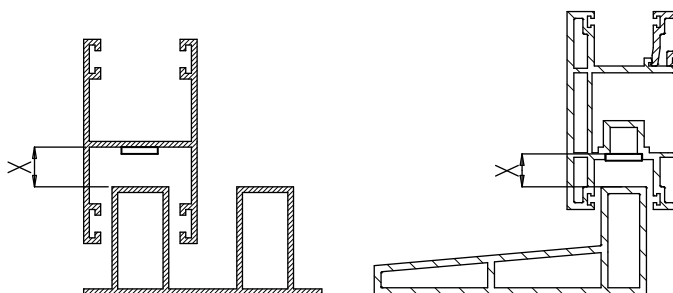
n° 6795-16 : B=16 mm
n° 6795-20 : B=20 mm

Shootbolt night vent wedge n° 6870-50-..

- Shootbolt night vent wedge with 1 locking position and 3 night vent positions. The sliding door can be locked in a night vent position in order to obtain a ventilation.



n° 6870-50-..

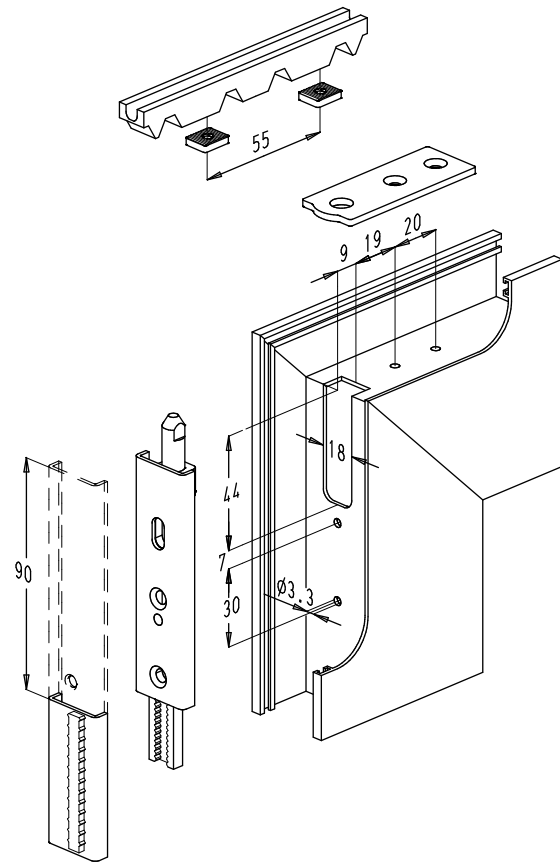


Wedges	H	Dimension X from ... to ... mm	
6870-50-8	8	16.5	20.5
6870-50-12	12	20.5	24.5
6870-50-16	16	24.5	28.5
6870-50-20	20	28.5	32.5
6870-50-24	24	32.5	36.5
6870-50-28	28	36.5	40.5

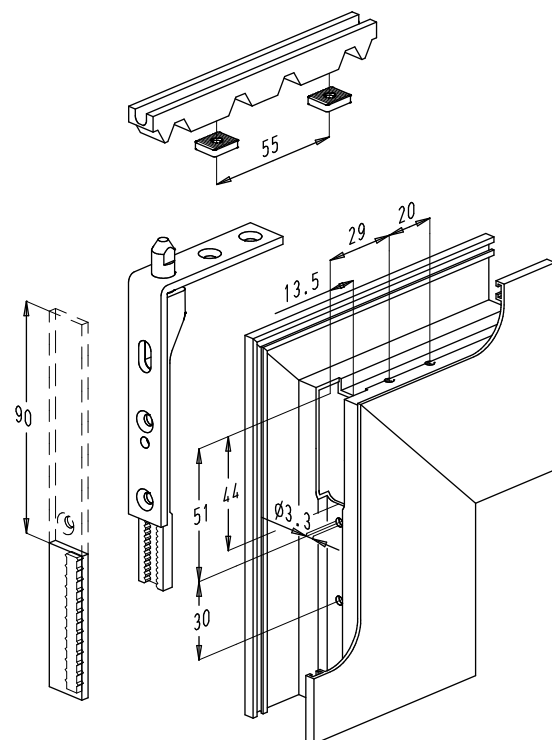


Dimensions for fixing holes shootbolt n° 6795

- Vent section with U-faceplate.
- Using:
 - shootbolt n° 6795-U20 or n° 6795-U24
 - shootbolt wedge n° 6870-50-..



- Vent section with flat faceplate.
- Using:
 - shootbolt n° 6795-16 or n° 6795-20
 - shootbolt wedge n° 6870-50-..

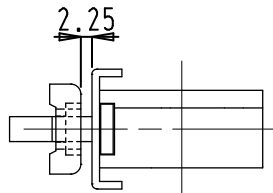




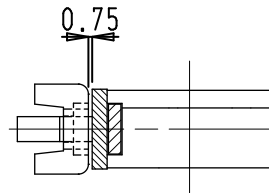
PENTA-LOCK

12. Application examples

Gap between wedge and face plate

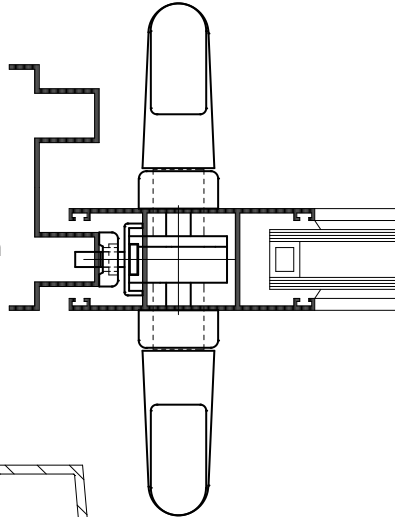


U-faceplate

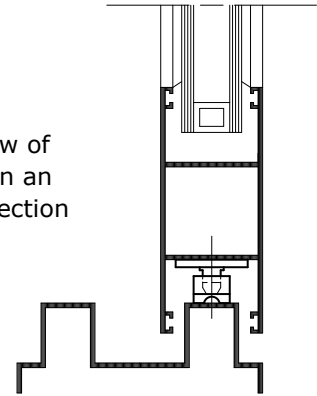


Flat faceplate

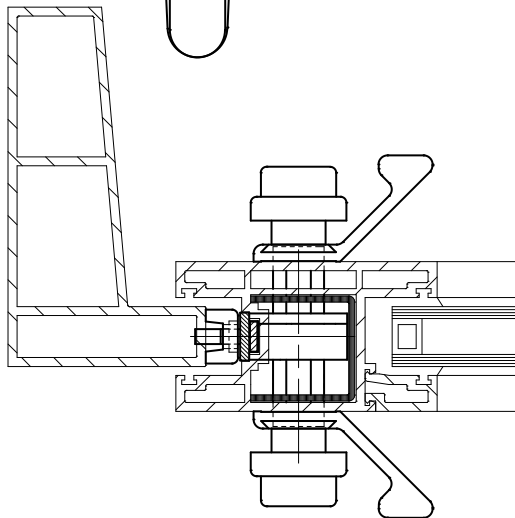
Horizontal sectional view of a lock in an aluminium section



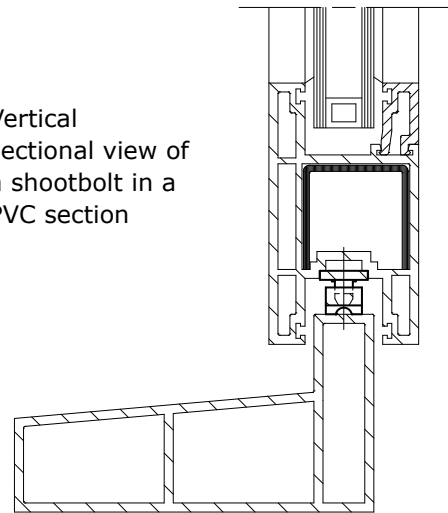
Vertical sectional view of a shootbolt in an aluminium section



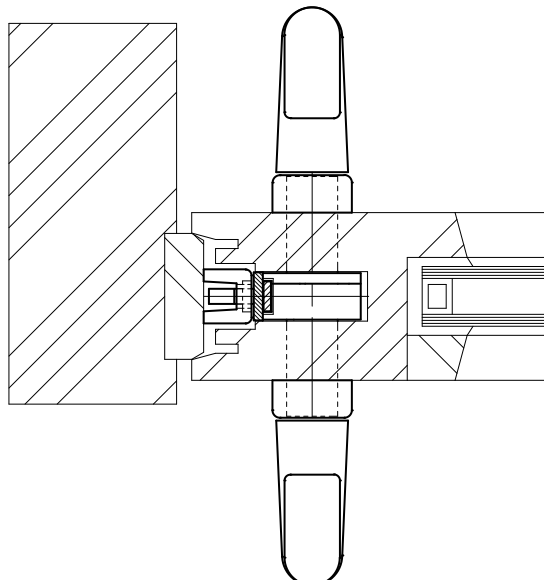
Horizontal sectional view of a lock in a PVC section



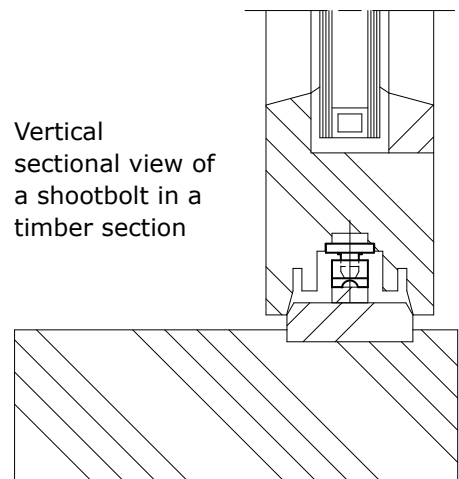
Vertical sectional view of a shootbolt in a PVC section



Horizontal sectional view of a lock in a timber section



Vertical sectional view of a shootbolt in a timber section

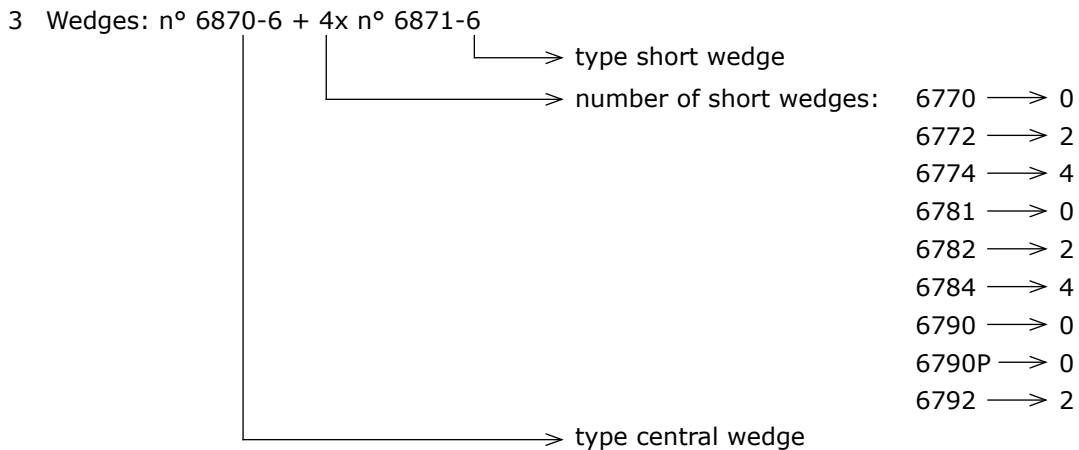
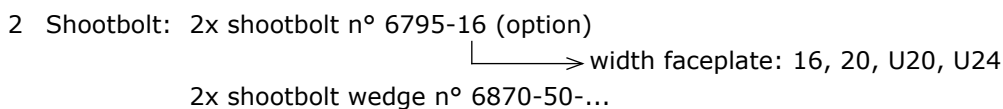
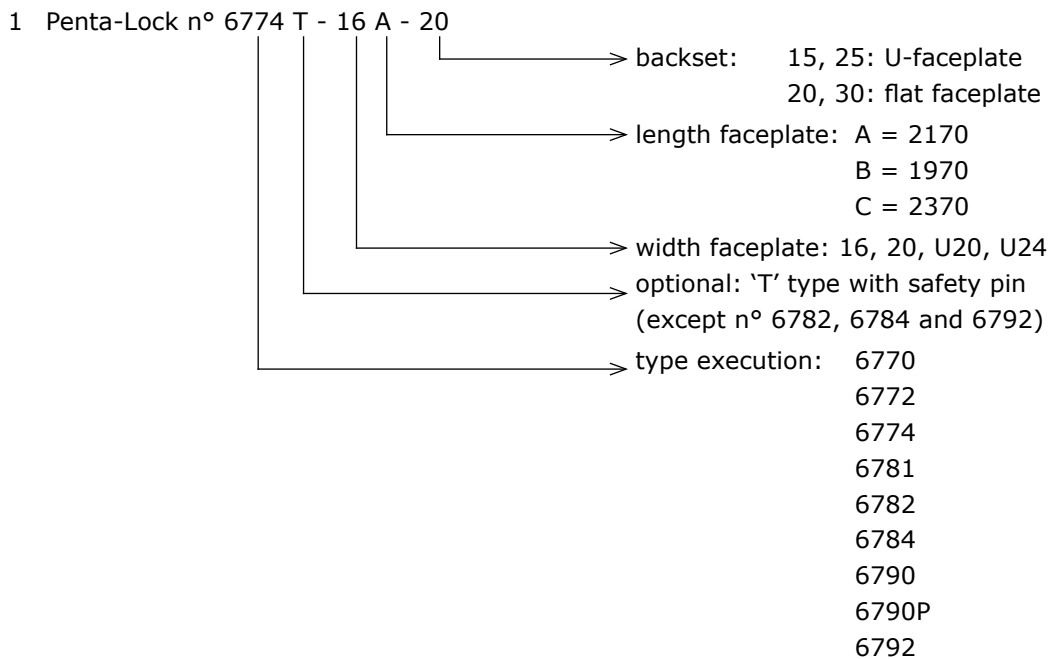




13. Ordering example

- 1 Penta-Lock n° 6774 T - 16 A - 20
- 2 2x shootbolt n° 6795-16 + 2x wedge n° 6870-50 (option)
- 3 Wedges: n° 6870-6 + 4x n° 6871-6
- 4 Cylinder: see section doors - cylinders: L12.11. and L12.12.

Explanation:





PENTA-LOCK

14. Penta-Lock type SKG

General information

- With increased security against burglary with the option of obtaining the SKG certificate.
- Sliding doors fitted with a half cylinder offer a high degree of security. This is because, even if the handle on the outside is removed, the cylinder can not be forced. In this situation the sliding door can be equipped with the standard Penta-Lock and standard door handles as described in the previous pages and in chapter L13.11.
- If your sliding doors are fitted with a full cylinder, maximum security against burglary can be obtained by using a special reinforced door handle. In this situation, the complete operating system will contain the following parts:
 1. Full safety cylinder type 'MAX': see section doors - cylinders: L12.11. and L12.12.
 2. Penta-Lock:
See pages L11.11.05 to L11.11.20 with standard wedges but with fixing holes M6 for the door handles and door pulls. This is only applicable for the Penta-Lock 6774S since this type has the highest burglary safety.
 3. Special reinforced handle n° 924L VI on the outside, in combination with handle n° 924L on the inside, both with fixing holes M6: see chapter L13.11.

SKG certificate (OPTION)

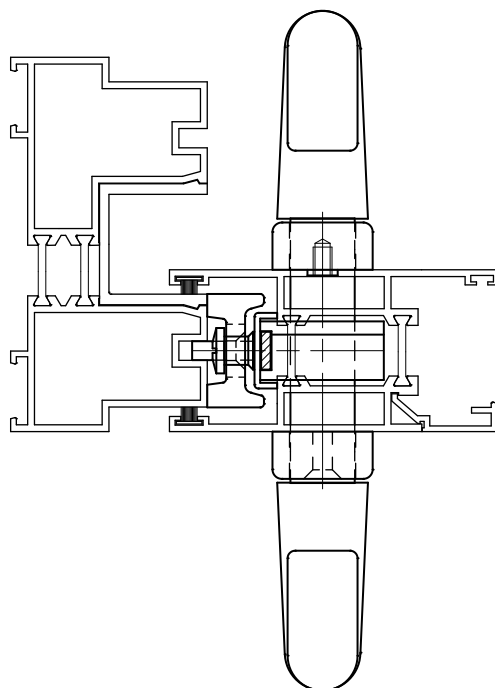
- If your sliding doors should comply with the highest requirements of security against burglary, you can replace the standard wedges and shootbolt night vent wedges with reinforced wedges or long keeps. On request, these can be made by Sobinco to suit the dimensions and characteristics of your sections.
- Testing must be carried out on complete assembled units, including sections, Penta-Lock, wedges, door handles and cylinder.
- To obtain a certificate of security against burglary (allocation of one or more stars) the sliding door must be tested in accordance with the standards of SKG (Stichting Kwaliteitscentrum Gevelelementen) in The Netherlands.





15. Long keeps

- If your sliding doors should comply with the highest requirements of security against burglary, you can provide long keeps.
- **The design of the long keeps is very profile-related and these can be made by Sobinco on request to suit the dimensions and characteristics of your sections.**
- Apart from the high security characteristics, a long keep also provides better aesthetics and is quicker and easier to install.
- Finish: aluminium anodised or polyester powder coated in more than 450 RAL colours so that they are entirely integrated in the window design.
- Types:
 - A = length 2170 mm
 - B = length 1970 mm
 - C = length 2370 mm
 - AL = length 2770 mm
 - BL = length 2570 mm
 - CL = length 2970 mm
- The long keeps AL, BL, CL are 600 mm longer than the standard long keeps A, B and C. These can be cut off and offer the advantage that you can provide a keep over the full height of the frame to get the best possible aesthetics.
- Installation example:



Detail locking point

